



**1005/157 A'beckett Street Melbourne VIC**

2  1 

Located in Melbourne's CBD with a wealth of dining, entertainment and shopping options nearby, Queens Place offers ultimate convenience that is second to none.

**Type** : Apartment  
**View** : <https://www.melplex.com.au/lease/vic/inner-city/melbourne/residential/apartment/8207201>

Superbly spacious and bright, this stunning 2 bed 1 bath apartment features an open plan living and dining area, modern and sleek kitchen with stone bench, stainless steel appliances including dishwasher, gas hob, range hood plus ample cupboard space, two bedrooms both with fitted wardrobes and serviced by a designer central bathroom.



**Mark Arnejo**  
03 90414959

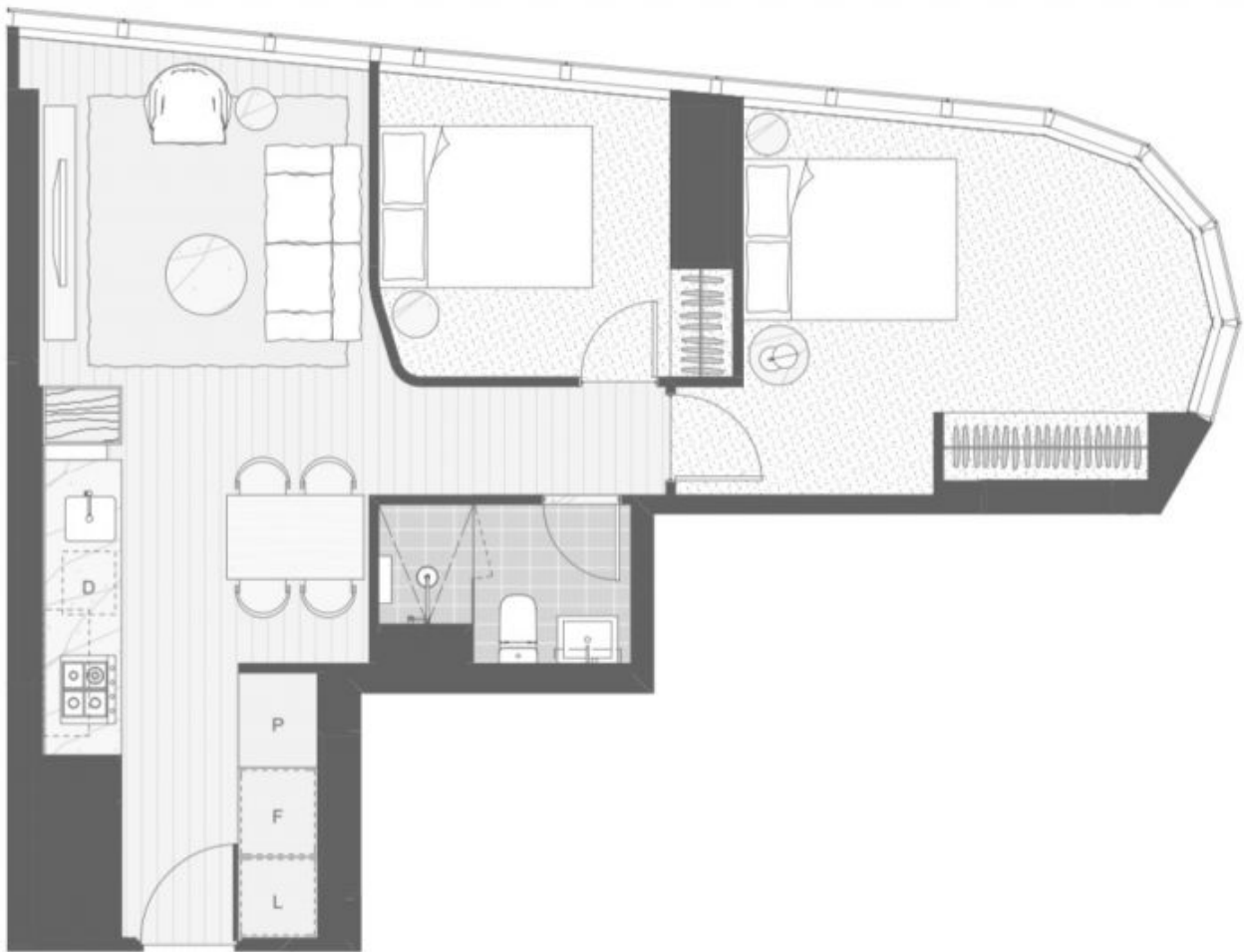


**Suzy Yao**  
03 90414959

Residents will have access to a variety of building amenities including

- Pool and spa

[For full version visit the website](#)



L: Laundry  
 D: Dish washer  
 F: Fridge  
 P: Pantry

Tower One

Queens Place

City Rise

Type B7C  
 2 bedroom and 1 bathroom

