

5319/228 La Trobe Street Melbourne VIC

2  1 

Aurora, right in the heart of Melbourne CBD and being the most sought-after landmark tower, has been well recognised as one of the most popular residential addresses in Melbourne, due to its strategic location in the middle of La Trobe St, Melbourne Central Shopping Centre, Emporium, Bourke St Mall, State Library, RMIT, Melbourne Uni, all within walking distances.

Apartment 5319 comprises of open plan living, Euro kitchen fully equipped with stainless steel appliances and stone island bench, two double bedrooms both with BIRs, a stylish bathroom and Euro cupboard laundry.

Aurora is well known for its unique and complete series of amenities for its resident, including indoor lap pool, gym,

Type : Apartment

View : <https://www.melplex.com.au/lease/vic/inner-city/melbourne/residential/apartment/8137494>

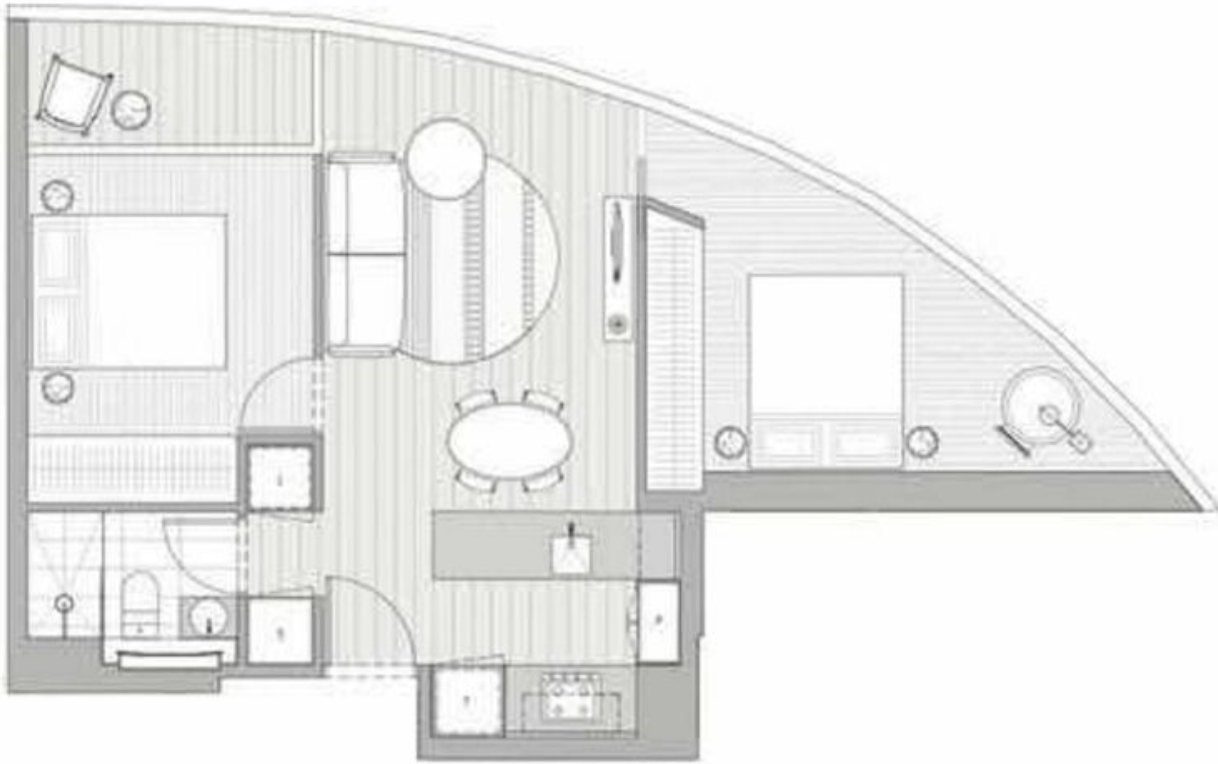


Mark Arnejo
03 90414959



Leah Zhao
03 90414959

[For full version visit the website](https://www.melplex.com.au)



this aspect

LEVEL 35-65	UNIT 13 & 19
LITTLE LA DRAGON STREET	
LA TRONCHE STREET	
2 BEDROOM / 1 BATHROOM	
APARTMENT	58.3m ²
WINTERGARDEN	4.2m ²
TOTAL	62.5m²