



1105/470 St Kilda Road Melbourne, VIC

 2  1

Modern Living In The Leopold

Prominently located on one of Melbourne's best boulevards, the popular reward winning Leopold Tower owns an enviable position within easy reach to all the amenities, including shops, cafes and elite schools such as Wesley College, plus multiple public transports.

Sitting on the 11th floor, Apartment 1105 offers open plan living, fully equipped kitchen with Euro appliances, two bedrooms, both with BIRs, stylish bathroom and Euro cupboard laundry.

Overlooking Leopold St, the generous sized balcony brings great natural light into the entire apartment.

Inspect: Saturday, 4th May 2024 12:30 - 12:45



Mark Arnejo

0499 229 809

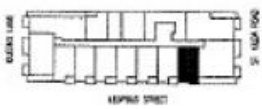
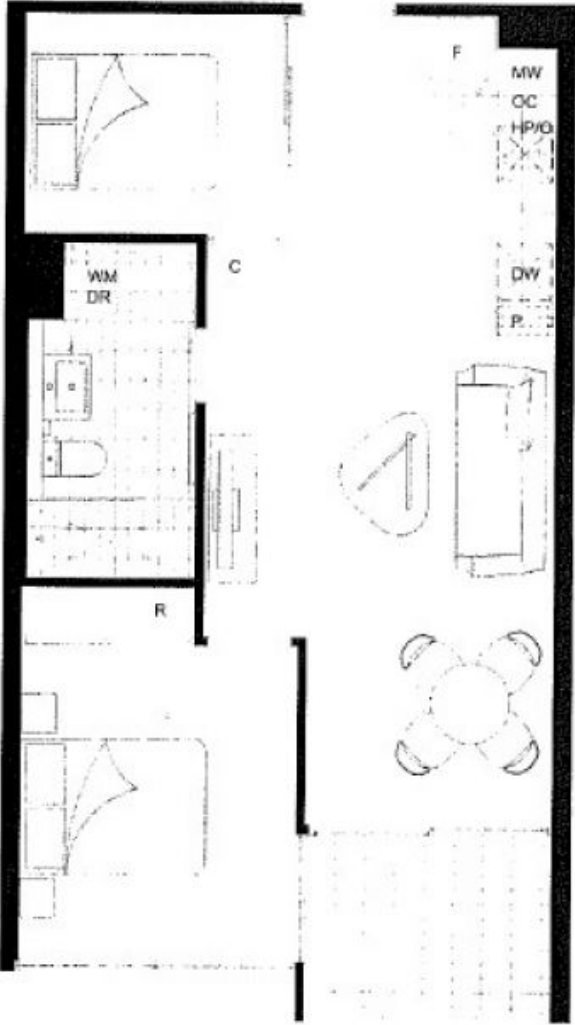
Leah Zhao

0434 698 348

BATMAN TWO

2 BEDROOM

LEVEL 9 - 12A, 14	SPECIFICATIONS	
APARTMENT 16	AREA	5.50sq m 59 SVP
LEOPOLD APARTMENTS	BMS/CONY	0.00sq m 0 SVP
470 SE BELMONT RD, MELBOURNE	TOTAL	5.50sq m 59 SVP



D/S	Disposal	DR	Dryer Space
F	Frige Space	W	Wardrobe Space
HP/O	Hot Water System	P	Porch
S	Stove	OC	Over the cupboard
MV	Mechanical Ventilation System		

These plans are prepared for the purpose of providing information only. They do not constitute a contract. The user of these plans is advised to consult a professional engineer or architect for advice on the interpretation and use of these plans. The user of these plans is advised to consult a professional engineer or architect for advice on the interpretation and use of these plans. The user of these plans is advised to consult a professional engineer or architect for advice on the interpretation and use of these plans.

