

301/93 Flemington Road North Melbourne, VIC



2



1

## Sunny and Bright with a Sought-after City Fringe Location

Situated on one of Melbourne's most grandest boulevards, Flemington Rd and with walking distances to many iconic amenities such as Queen Victoria Market, Royal Melbourne Zoo and hectares of parklands, The Helio Tower offers its residents not just a super convenient location but also a contemporary lifestyle that modern people are longing for.

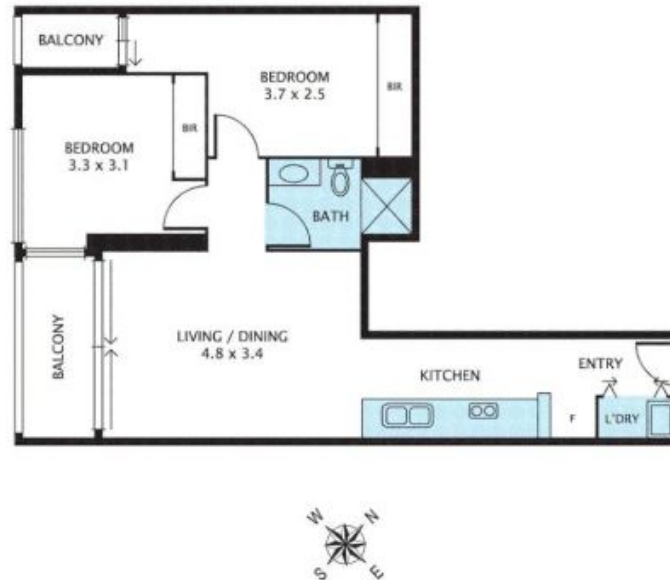
Flooded with fantastic natural light and with lovely views, Apartment 301 features a spacious layout with generous open plan lounge flowing seamlessly through to the private balcony, two double bedrooms, both with BIRs, central bathroom with double shower.

Other highlights include floor to ceiling windows, oak timber floorboards, natural wool fibre carpets to bedrooms, porcelain tiled bathroom and split-system air-conditioning (heati



**Gerry Wang**

0402 414 065



Disclaimer: Please note plans are indicative only and not drawn to exact scale. All dimensions are approximate. Potential buyers should satisfy themselves of pertinent matters.