



B7/460 Victoria Street Brunswick, VIC

 1  1  1

## Rare Find Ground Floor Beauty with Leafy Courtyard

Situated right in the heart of Brunswick and perfectly located on the Ground Floor of the Building B of the popular Pearson and Victoria complex, this unique and extra spacious Ground Floor apartment is definitely a rare find for either homeowners or investors.

Also features split system air-conditioning, intercom system and one security car park.

Inspection by Appointment.



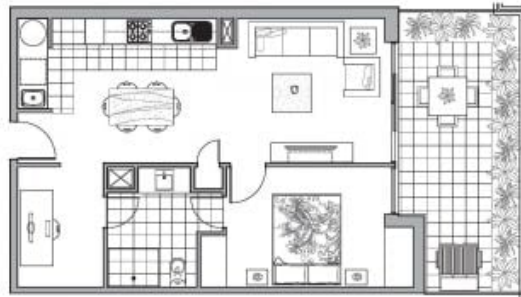
**Gerry Wang**

0402 414 065



### Apartment Type I B007

Apartment: 60.00m<sup>2</sup>  
Balcony: 18.50m<sup>2</sup>  
Area: 78.50m<sup>2</sup>



TYPE I: B008

Pearson & Victoria / 460 Victoria Street Brunswick

Dimensions and areas are approximate and are subject to change without notice. Internal measurements are taken from restrictive of party walls, external face of corridors and the external face of outside walls. Prospective purchasers must rely on their own enquiries and should refer to the plans, terms and conditions contained in the contract of sale. Lease furniture, white goods and planters are not included. Colors of floor finishes may vary from the City Model Plan for individual site presentation.

PEARSON & VICTORIA