



1105/470 St Kilda Road Melbourne, VIC

 2  1

The Cutting Edge Leopold

Prominently located on one of Melbourne's best boulevards, the popular reward winning Leopold Tower owns an enviable position within easy reach to all the amenities, including shops, cafes and elite schools such as Wesley College, plus multiple public transports.

Sitting on the 11th floor, Apartment 1105 offers open plan living, fully equipped kitchen with Euro appliances, two bedrooms, both with BIRs, stylish bathroom and Euro cupboard laundry.

Overlooking Leopold St, the generous sized balcony brings great natural light into the entire apartment.

Overlooking Leopold St and with walking distances to Albert Park Lake, it is ideal for all



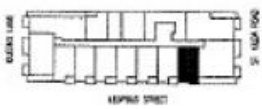
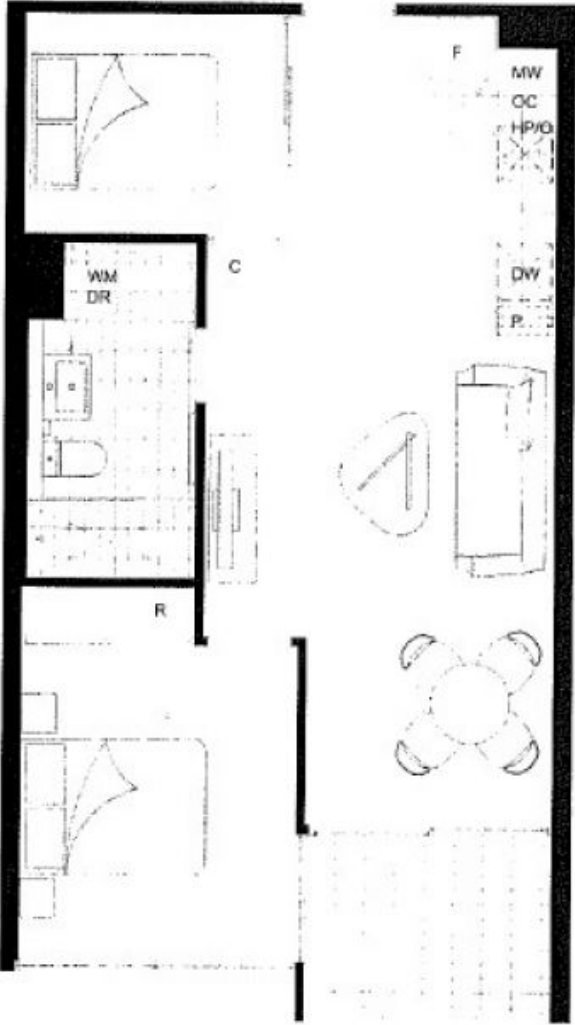
Gerry Wang

0402 414 065

BATMAN TWO

2 BEDROOM

LEVEL 9 - 12A, 14	SPECIFICATIONS	
APARTMENT 16	AREA	5.50sq m 58 SVP
LEOPOLD APARTMENTS	BMS/CONY	0.00sq m 0 SVP
470/52 MELBOURNE, MELBOURNE	TOTAL	5.50sq m 58 SVP



D/S	Disposal	DR	Dress Spare
F	Frige Spare	W/B	Washing Machine
HP/O	Hot Water Over	P	Port
S	Slope	OC	Over the cupboard
WV	Washing Machine Space		

These plans are prepared for the purpose of providing information only. They do not constitute an offer of any financial product. The information contained in these plans is for general information only and should not be relied upon as a basis for investment decisions. The information contained in these plans is subject to change without notice. The information contained in these plans is for general information only and should not be relied upon as a basis for investment decisions. The information contained in these plans is subject to change without notice.

