



1604/371 Little Lonsdale Street Melbourne VIC

2  2 

***FURNISHED**

Type : Apartment

View : <https://www.melplex.com.au/lease/vic/inner-city/melbourne/residential/apartment/7773785>

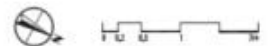
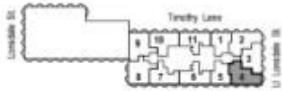
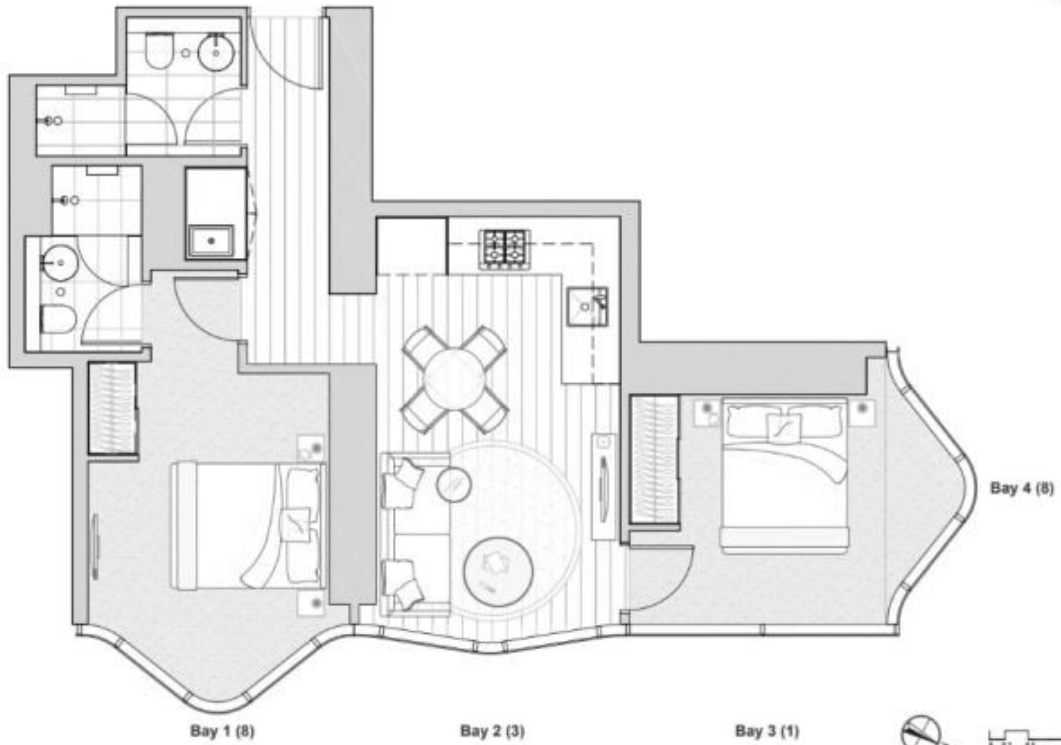
Designed by Elenberg Fraser and situated in the very heart of Melbourne CBD, 380 Melbourne incorporates an array of first-class amenities, all complemented by the supreme convenience of having many of the best amenities in close proximity including shops, restaurants and cafes, public transport and universities.



Mark Arnejo
03 90414959

Sitting on the 16th floor, Apartment 1604 offers breathtaking city views through the floor to ceiling windows in all rooms, open plan living and dining space with timber floors throughout, fully equipped sleek Euro kitchen with Miele appliances, two double bedrooms, both with built in robes, main with Ensuite, and a sparkling central bathroom

[For full version visit the website](https://www.melplex.com.au)



INDIVIDUAL APARTMENT PLAN

Plans are indicative and may be varied in accordance with Contract of Sale. Furniture depicted is not included. Refer to the Contract of Sale for included fixtures & fittings. Areas are calculated using the Property Council of Australia's Method of Measurement for Residential Property.

Revision: A Updated: 03/02/17

