

3508/228 La Trobe Street MELBOURNE VIC

2  1 

***UNFURNISHED**

Aurora, right in the heart of Melbourne CBD and being the most sought-after landmark tower, has been well recognised as one of the most popular residential addresses in Melbourne, due to its strategic location in the middle of La Trobe St, Melbourne Central Shopping Centre, Emporium, Bourke St Mall, State Library, RMIT, Melbourne Uni, all within walking distances.

This 2-bed 1-bath apartment comprises of open plan living, Euro kitchen fully equipped with stainless steel appliances and stone island bench, two double bedrooms both with BIRs, a stylish bathroom and Euro cupboard laundry.

Type : Apartment

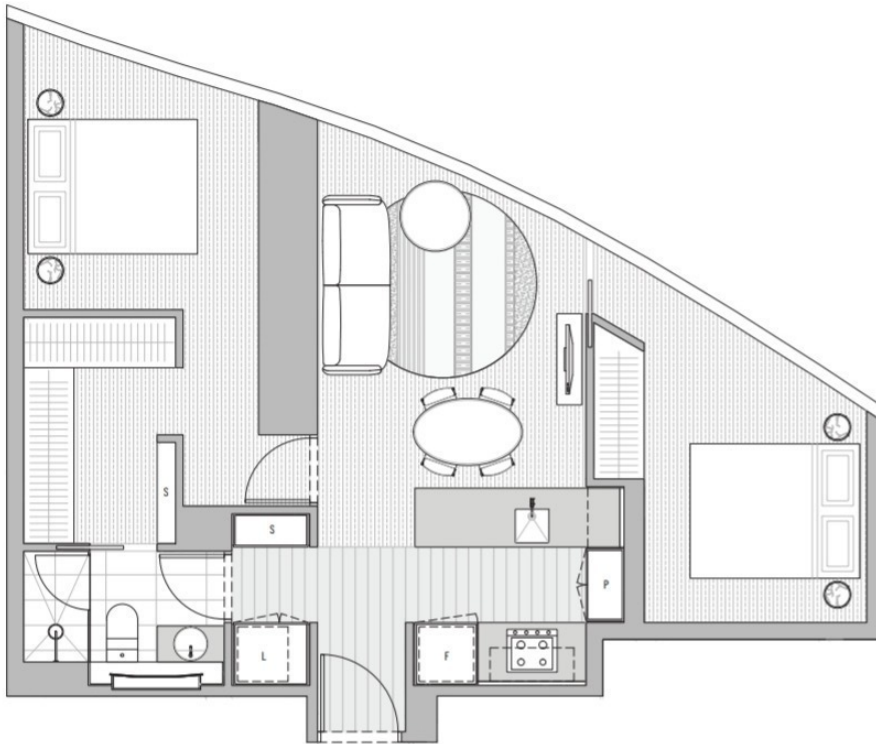
Price : \$ 750

View : <https://www.melplex.com.au/lease/vic/inner-city/melbourne/residential/apartment/7369727>



William Lai
03 9021 0918

[For full version visit the website](https://www.melplex.com.au)



**North facing Direction:
plenty of sunshine
(朝北户型, 阳光充足)**

LEVEL 10-31		UNIT 02	
LITTLE LA TROBE STREET			
LA TROBE STREET			
2 BEDROOM / 1 BATHROOM			
APARTMENT		58.6m ²	
BALCONY		0.0m ²	
TOTAL		58.6m²	

Before the completion of the design, engineering and construction elements of the project. The floor plans are intended only as a guide and an aid to further investigations by potential purchasers and are subject to change in relation to areas and engineering, fittings and specifications. The areas and dimensions set out in the floor plans are calculated using the Property Council Method of Measurement for Residential Property current at the date of preparation of the floor plans. Prospective enquiries and obtain their own independent legal advice in relation to the contract of sale.