



1502/568 Collins Street MELBOURNE, VIC

 2  1  1

Corner Opportunity at the Most Sought-After Location

Exclusively situated on the Western end of Collins St and only with walking distance to Southern Cross Station, Crown Entertainment Complex, Melbourne Aquarium and multiple public transports just downstairs, Collins Tower is regarded as a very popular residential tower due to its unique position at the most prestigious addresses in Melbourne's CBD.

Sitting on the South-East corner of 15th floor with great CBD views, Apartment 1502 provides a convenient modern lifestyle, either as a perfect first home or a long-term investment.

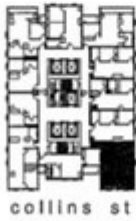
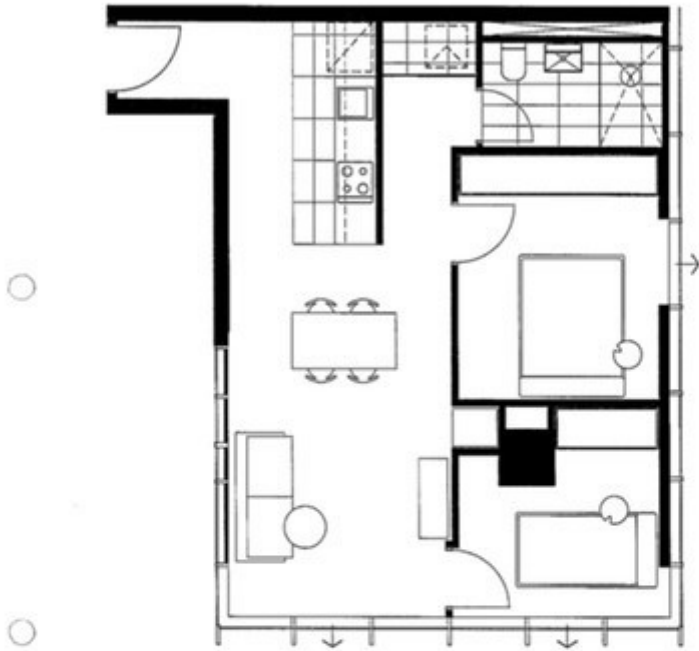
The luxury skyscraper offers many first-class facilities such as secure entrance, swimming



Gerry Wang

0402 414 065

APARTMENT PLAN



int. area 61m²
 balc. area 0m²
 total area 61m²

apartment
 15.02



Handwritten signature

15.11.2013

568
collins street

 Crucio Henderagh Architects

This preliminary plan shows the proposed apartment layout for the 568 Collins Street site at the intersection of the Collins Street and High Street. The ground level may change before the release of the final building permit. The plan is subject to change and a public draft plan may be issued for the purpose of this plan. A public draft plan may be issued. Results should be used at the user's discretion. All rights reserved. © 2013 Crucio Henderagh Architects.