

G16/555 St Kilda Rd MELBOURNE, VIC

 2  1  1

Luxurious Living in Parque Apartment

Situated within walking distance to parks, local shops and great schools, Parque apartment is an ideal place to call home.

This amazing ground floor apartment of an approx. size of 65sqm features a spacious terrace with a superb outlook, open plan living and dining space, modern kitchen completed with stone benchtops and world-class Miele appliances, two bedrooms both with BIRs serviced by a central bathroom.

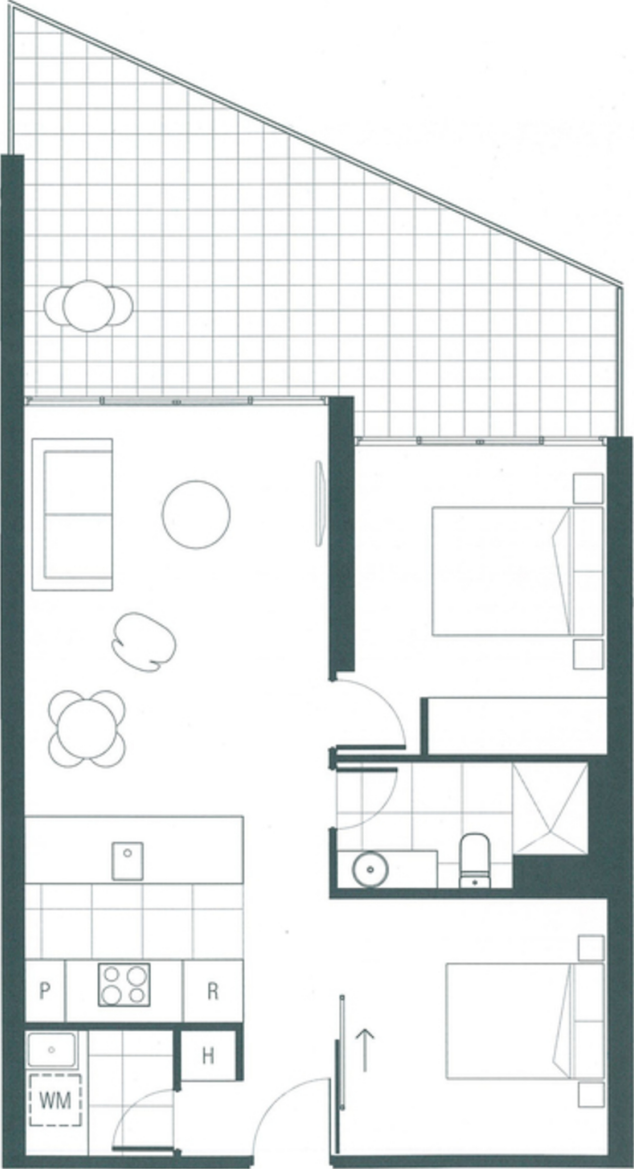
Parque's impressive luxurious facilities include:

- ? 24-hour concierge service
- ? Secure entrances and private parkland
- ? A yoga area, gym and massage room



Melplex Real Estate William Lai

0434 698 348



PARQUE

MELBOURNE

G16

Internal area	65m ²
Balcony area	23m ²
Total area	88m ²

