




Melplex 



Melplex 



Melplex 



Melplex 

4018/224 La Trobe Street MELBOURNE, VIC



2



2

## A Rare Call from the Most Sought-After Aurora

Aurora, right in the heart of Melbourne CBD and being the most sought-after landmark tower, has been well recognised as one of the most popular residential addresses in Melbourne, due to its strategic location in the middle of La Trobe St, Melbourne Central Shopping Centre, Emporium, Bourke St Mall, State Library, RMIT, Melbourne Uni, all within walking distances.

Also features all around floor to ceiling windows, timber floorboards and air-conditioning.



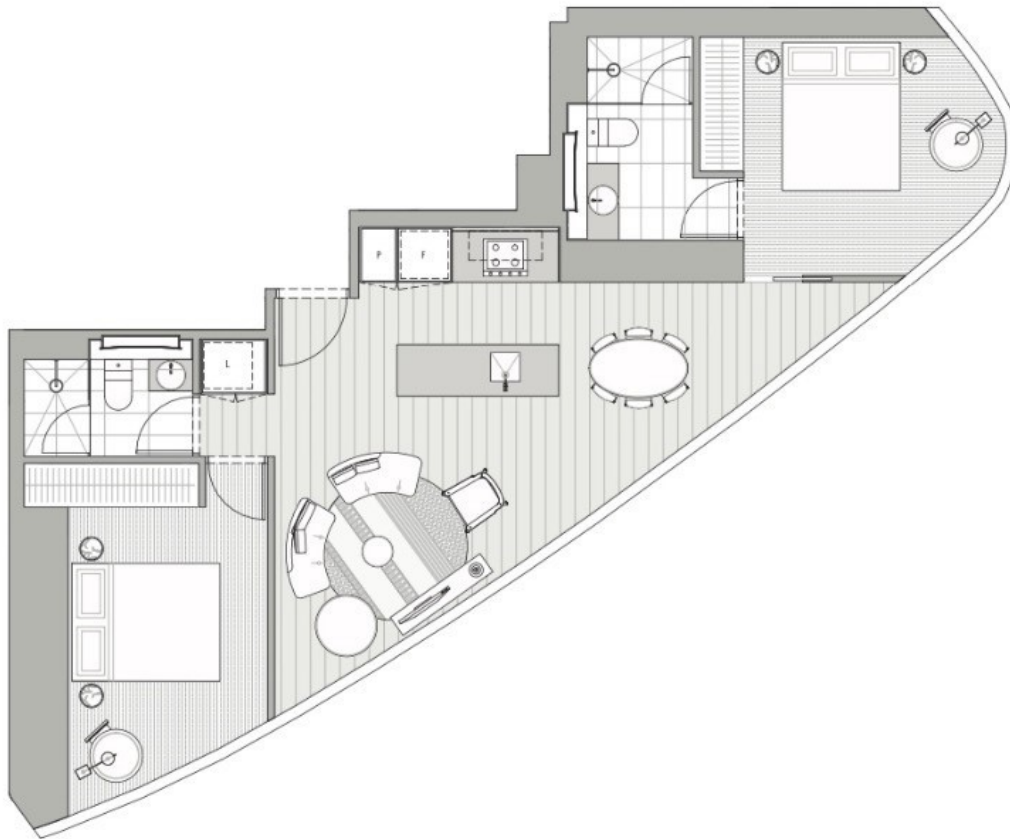
**Gerry Wang**

0402 414 065



THE CUMULUS COLLECTION

APARTMENT TYPE C2



<b>LEVEL 35-65</b>		<b>UNIT 15 &amp; 18</b>	
LITTLE LA TROBE STREET			
			
LA TROBE STREET			
			
<b>2 BEDROOM / 2 BATHROOM</b>			
APARTMENT		69.4m <sup>2</sup>	
WINTERGARDEN		0.0m <sup>2</sup>	
<b>TOTAL</b>			

Floor plans were prepared before the completion of the design, engineering and construction elements of the project. The floor plans are intended only as a guide and an aid to further investigation by potential purchasers and are subject to change in relation to areas and dimensions. Floor layout, design, engineering, fittings and specifications. The areas and dimensions set out in the floor plans are calculated using the Property Council Method of Measurement for Residential Property current at the date of preparation of the floor plans. Prospective purchasers should make their own enquiries and obtain their own independent legal advice in relation to the contract of sale.

157501427# ID: 487262833