



XX5/512 Spencer Street WEST MELBOURNE, VIC

 1  1  1

A New Mark for Modern Living

Perfectly situated in the heart of West Melbourne, the Marker, as a forthcoming landmark residential building, provides a statement of modern living to a significant higher standard of modern urban living.

Also features, floor to ceiling windows, timber floorboards, air-conditioning, intercom system and one security car park on title plus a storage cage.

The Marker amenities also include Resident's lounge featuring kitchenette and dining zone, Banquette and cocktail lounge seating, Meeting rooms with TV and conference facilities, Landscaped resident's courtyard with BBQ.

With only a short stroll to Melbourne CBD and surrounded by shops, cafes, restaurants, parks and gardens, plus all the public transports and elite schools, the Marker's location is

Melplex 

Gerry Wang

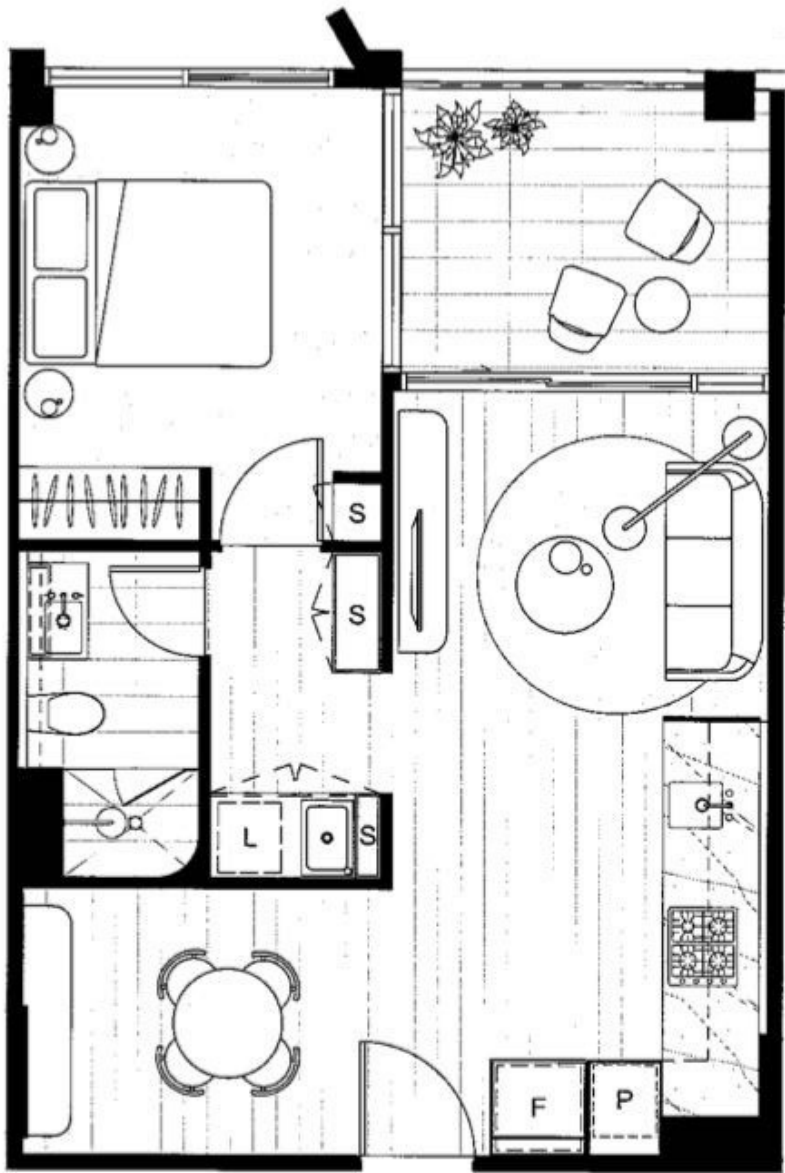
0402 414 065



THE MARKER

STANLEY & SPENCER
EDITION

STANLEY STREET
RESIDENCE 405



XX5/512 Spencer Street

WEST MELBOURNE, VIC



F - FRIDGE P - PANTRY S - STORAGE L - LAUNDRY
THEMARKERAPARTMENTS.COM.AU