

411/23 Batman Street WEST MELBOURNE, VIC

 2  1.5  1

Rare Loft Urban Living at Flagstaff Garden

Situated in a quiet and tree-lined street of central West Melbourne, Flagstaff Green, as a superb residential development, has been offering its privileged residents a modern and convenient lifestyle.

Leading upstairs by a staircase are the two generous bedrooms, both with BIRs and the stylish bathroom for sharing.

Also features, floor to ceiling windows, timber floorboards throughout, air-conditioning, intercom system and a security car park on title.

Only a few blocks away from CBD, Flagstaff Green holds enviable central location in West Melbourne, well within the precinct of the Iconic Queen Victoria Market, Southern Cross Station, free tram zone of multiple trams, not to mention many Melbourne's elite schools and



Gerry Wang

0402 414 065



FLAGSTAFF GREEN

LOT N^o 411

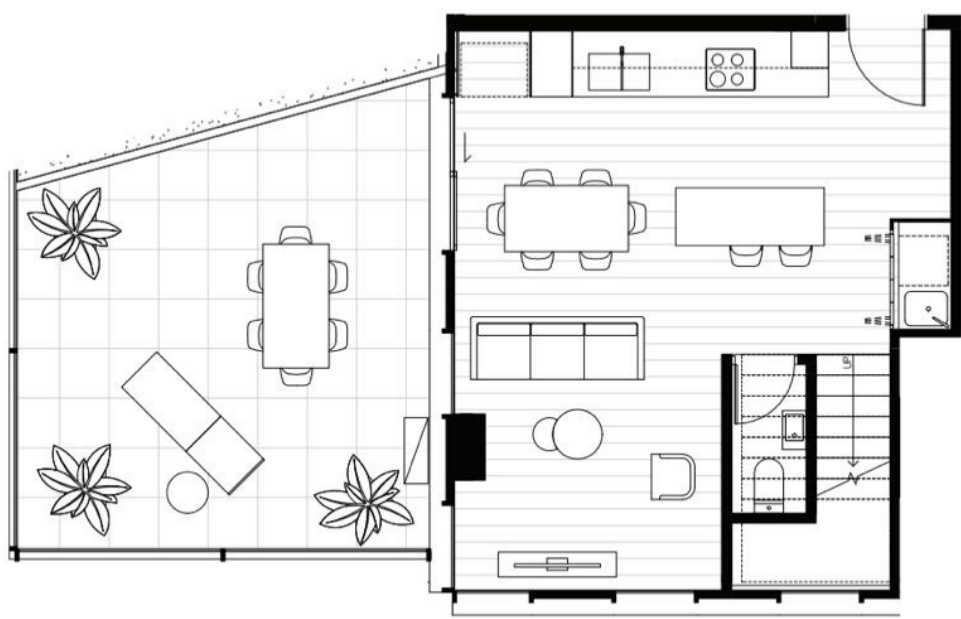
2 Bed 1 1/2 Bath

INTERNAL AREA	75.8m²
BALCONY AREA	33.5m²
TOTAL AREA	109.3m²

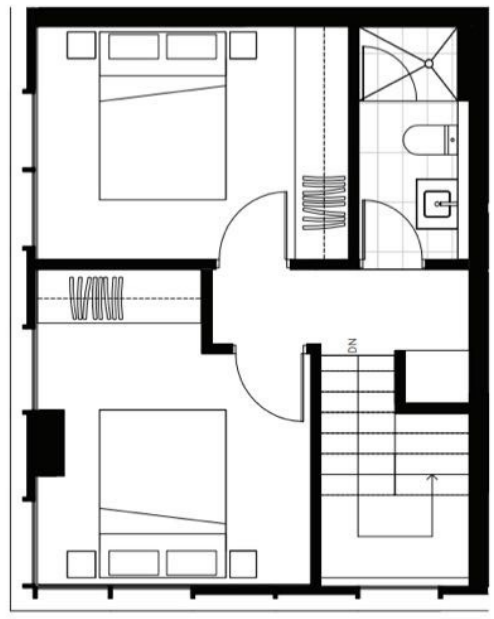


SPEC PROPERTY

Drawings are indicative only. Whilst Spec Property has endeavoured to provide accurate information, it does not warrant or guarantee the accuracy or completeness of the information. Lot numbers may not correlate with final apartment numbers allocated by council. All plans are indicative only and completed prior to completion of the design and construction of the project. Therefore design, dimensions, fittings and specifications are subject to change. Plans issued March 2016, Victoria.



LOWER FLOOR PLAN



UPPER FLOOR PLAN



15-31 BATMAN STREET, WEST MELBOURNE