



1211/677 La Trobe Street DOCKLANDS, VIC

 2  1  1

## Style & Luxury of Waterfront Living

Situated right at the gateway, connecting Melbourne CBD and Docklands, next to Marvel Stadium and Southern Cross Transport hub, with walking distance to Docklands Harbour, waterfront entertainment and a whole series of shops, cafes, restaurants, M Docklands is an iconic multi-use complex providing luxury lifestyle and unbeatable convenience to its residents.

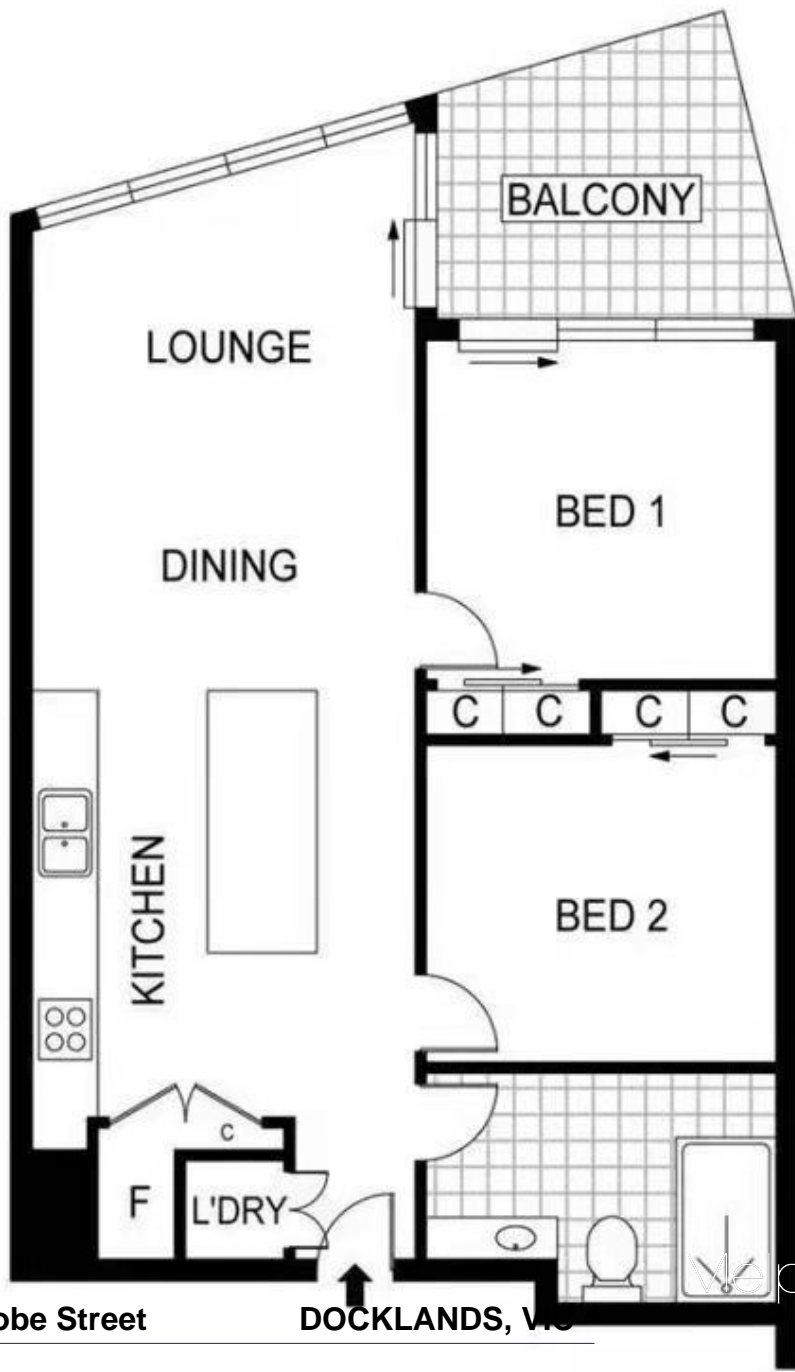
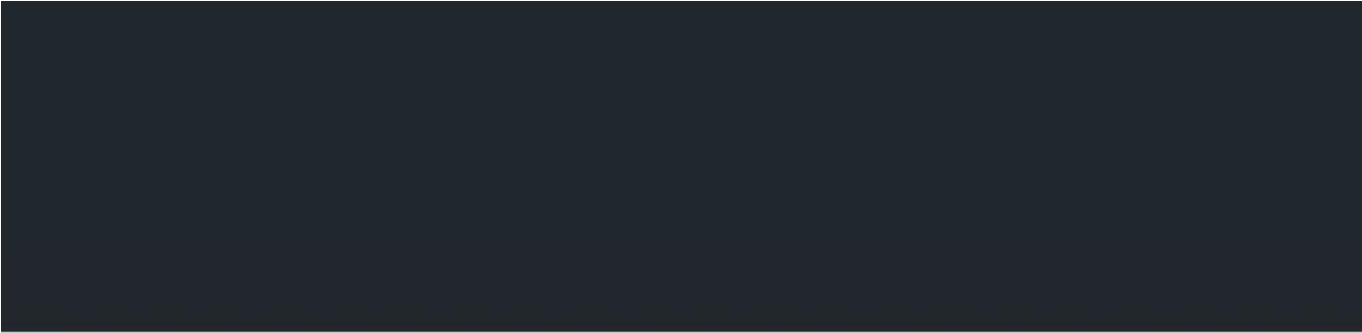
Sitting on the 12th floor and absolutely presented, Apartment 1211 is a rare opportunity suitable for either a solid investment or a beautiful home to live in.

Only a short walk or a quick tram ride to CBD, the Stadium precinct offers the best of Doc



**Gerry Wang**

0402 414 065



1211/677 La Trobe Street

DOCKLANDS, VIC