



1812/250 Elizabeth Street MELBOURNE, VIC

 1  1

## Spacious Apartment in CBD with Gas & Water Bills Included

\*Inspection by private appointment only

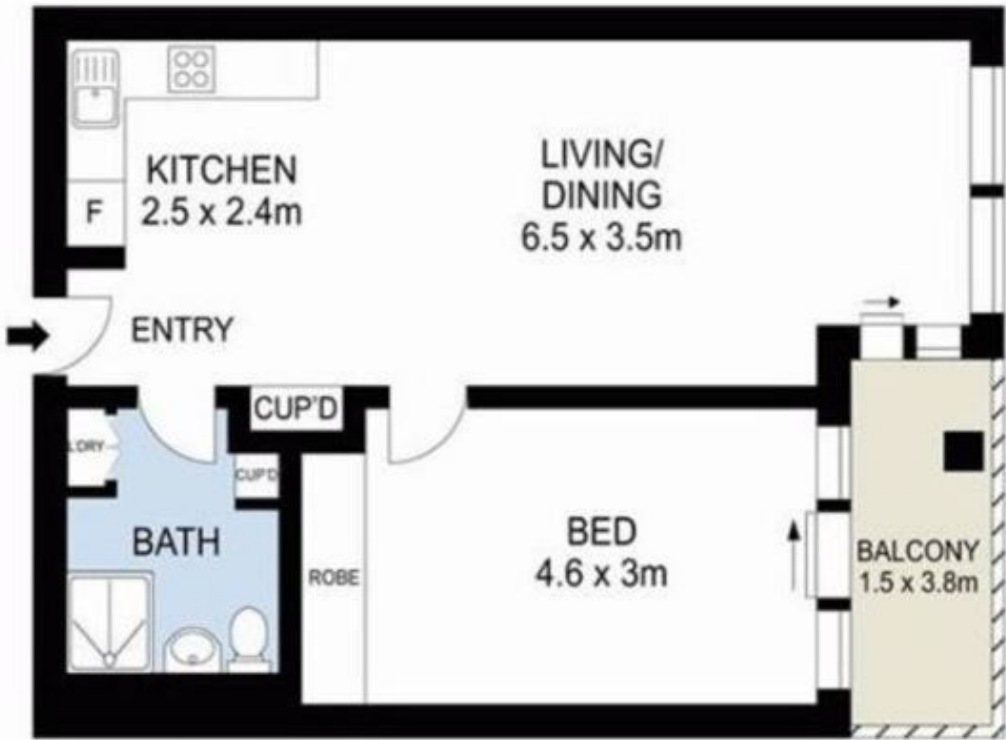
Situated literally in the heart of Melbourne CBD, this bright and generous one bedroom apartment on the 18th floor of the famous Somerset Tower is now available as a great opportunity for someone to fully enjoy a convenient lifestyle.

Apartment 1812 comprises open plan living, L-Shaped kitchen with stainless steel appliances and gas top, large double bedroom with BIRs, a good-sized bathroom with new shower screen and separate laundry.

Right at the corner of Elizabeth St and Lonsdale St, Somerset Tower is located in an envious central position of Melbourne CBD, with Emporium, Myer, GPO Shopping Centres, China Tow



**Melplex Real Estate**



0 1 2 3 4 5  
Scale in metres. Indicative only. Dimensions are approximate.

