



1005/37-43 Park Street SOUTH MELBOURNE, VIC

 2  2  1

A Forthcoming Strong Statement of Modern Living

Right in the heart of South Melbourne and within easy reach to many of Melbourne's most iconic landmarks, including public transports, parks, shopping and schools, Park Residences, currently under construction and estimated to be completed late 2021, will definitely attract many Melbournians for its Manhattan-style high class modern living.

Also features, dark colour scheme with timber floorboards, air-conditioning, both heating and cooling, intercom system and one security car park (car stacker) and a storage cate.

Designed by highly regarded CHT Architects and developed by Milbex, Park Ave will definitely be a new landmark residential tower in this fantastic most desirable location of one of



Gerry Wang

0402 414 065

PARK AVE

MELBOURNE

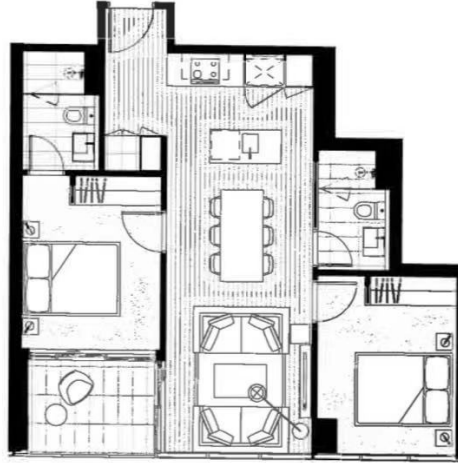
2 Bedroom, 2 Bathroom,
1 Car park

SIZE

Internal 65.1 m²
 External 6 m²
 Total area 71.1 m²

APARTMENTS

6.05, 7.05, 8.05, 9.05, 10.05, 11.05,
 12.05, 13.05, 14.05, 15.05, 16.05, 17.05



Disclaimer: This document is provided for information only. It is not intended to constitute an offer of any financial product. The information contained herein is not intended to be relied upon in making any investment decision. The information contained herein is not intended to be used as a basis for any investment decision. The information contained herein is not intended to be used as a basis for any investment decision. The information contained herein is not intended to be used as a basis for any investment decision.

