



4008/568 Collins Street MELBOURNE, VIC

 2  2  1

## When Prestigious Address Meets Priceless Views

Prominently situated on Melbourne's most prestigious street, Collins St, surrounded by many of top landmarks, such as Rialto Tower and only with a short distance from Southern Cross Station, Crown Entertainment Complex, Melbourne Aquarium and multiple public transports, Collins House is one of the most sought-after residential towers offering a convenient and luxury modern lifestyle.

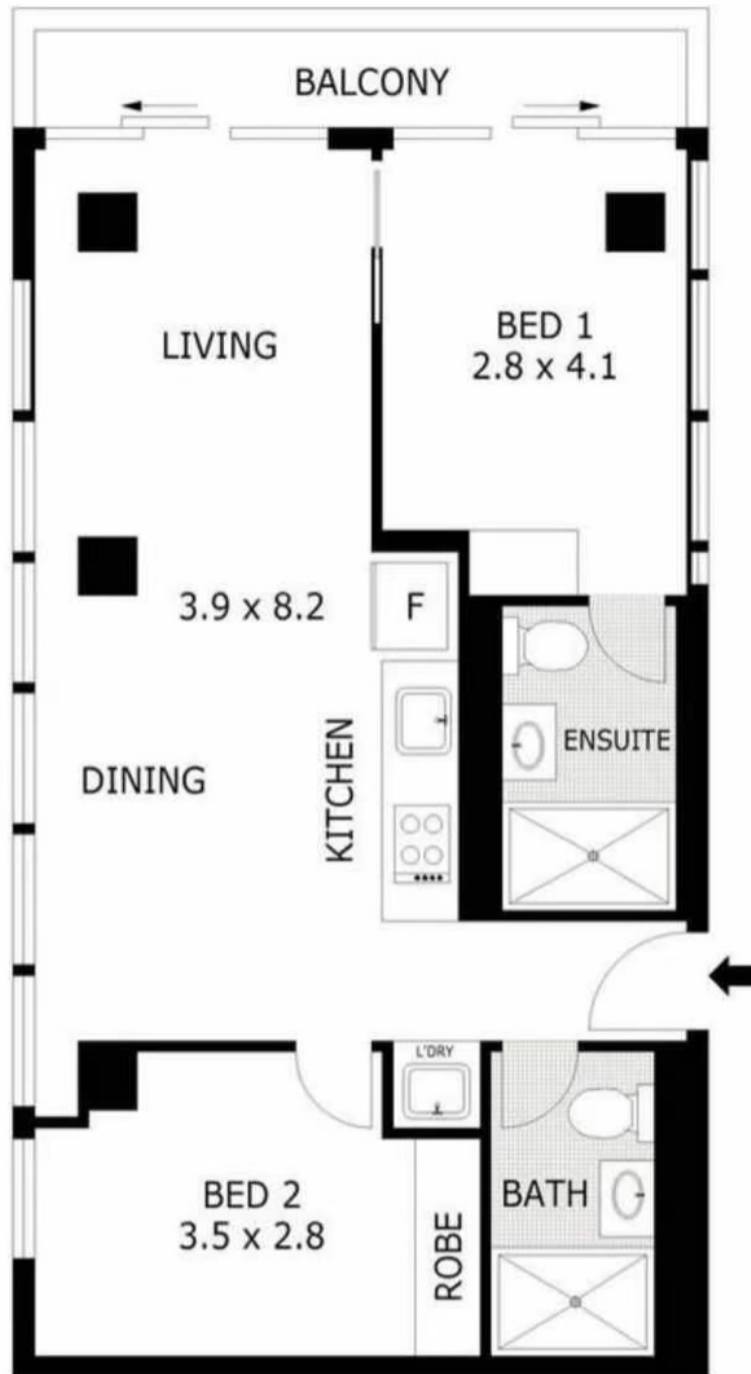
Situated on the North-western corner of 40th Floor, Apartment 4008 enjoys stunning 180 degree views over Port Phillip Bay as well as ample Northernly natural light throughout the apartment through the floor to ceiling windows.

Comprising open plan living, sleek kitchen equipped with European appliances, two bedrooms, both with BIRs and own windows, master with ensuite, second bathroom with shower, Euro I



**Gerry Wang**

0402 414 065



Scale in metres. Indicative only. Dimensions are approximate. All information contained herein is believed to be reliable, but Melplex does not guarantee its accuracy and interested parties should rely on their own enquiries.