



1704/16-22 Claremont Street SOUTH YARRA, VIC



3



2



2

## Ultimate Luxury, Timeless Elegance

Exclusively situated in Melbourne's most prestigious suburb, South Yarra, designed by world renowned Fender Katsalidis Architects, Yarra One is undoubtedly a new landmark residential tower, which provides an unprecedented new lifestyle and defines a whole new level of luxury standard.

Other fantastic features include, floor to ceiling windows, hardwood timber floor boards, reverse-cycle air-conditioning, heating and cooling, video intercom, the modern keyless lock system and two car parking spaces.

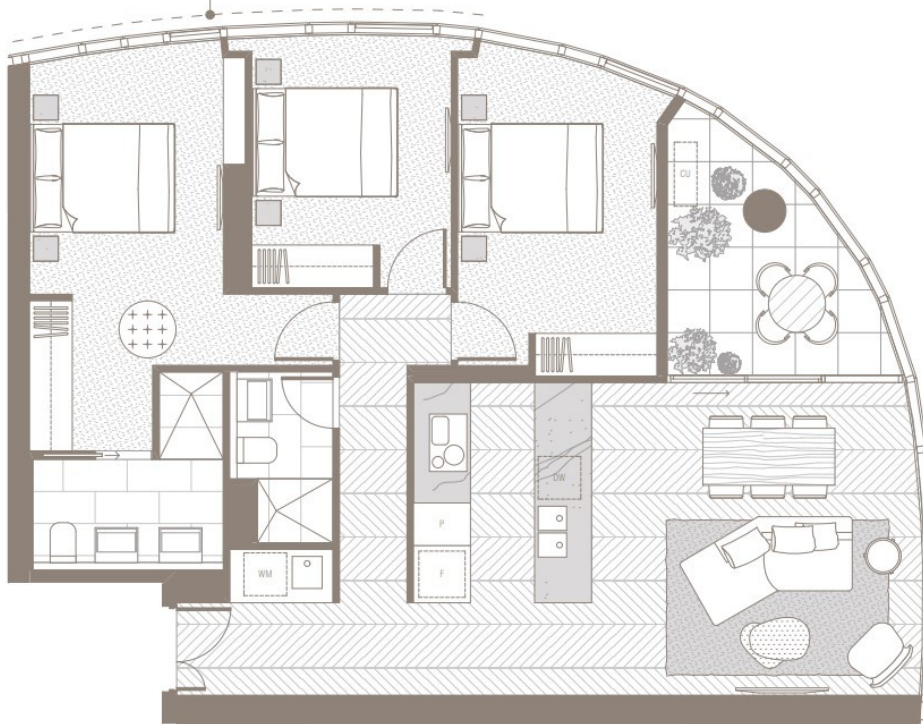
Yarra One, taking an exclusive position in the heart of South Yarra, connecting Yarra Lane to Daly Street, with the unique atrium is now one of Melbourne's most privileged neighbourhood. With Toorak Rd and Chapel Street shopping precinct, beautiful cafés and restaurants

Melplex 

**Gerry Wang**

0402 414 065

DIRECTIONAL VIEW



This plan and any areas shown may be subject to the terms of the contract and be subject to amendments and dimensional changes to suit final working drawings, grid layout and authority requirement. The area of apartments has been measured to the boundaries of the floor and where a boundary comprises a wall or glass line and includes any ducts. All dimensions are approximate.



**YARRA ONE**  
SOUTH YARRA



**TYPE E02**

**3 BED, 2 BATH**

1704, 1804, 1904

Internal:	99m <sup>2</sup>
External:	10m <sup>2</sup>
Total:	109m <sup>2</sup>

FENDER KATSALEDIS ARCHITECTS