



1905/296 Little Lonsdale Street MELBOURNE, VIC

 2  1

North-Facing Apartment with Furniture and White Goods

Perfectly positioned in the centre of Melbourne CBD, Union Tower is within Free Tram Zone and close to everything including cafes, eateries, shops and universities.

Apartment features:

- NORTH FACING WITH PLENTY OF SUNSHINE
- Furniture and white goods included
- Two spacious bedrooms both with mirrored BIRs and windows
- Open plan living & dining with timber floor boards throughout
- Kitchen with stainless steel appliances and plenty of storage space
- Contemporary bathroom
- Private laundry

Other features include: double glazed windows, security entrance and split system air cond



Melplex Real Estate Suzy Yao

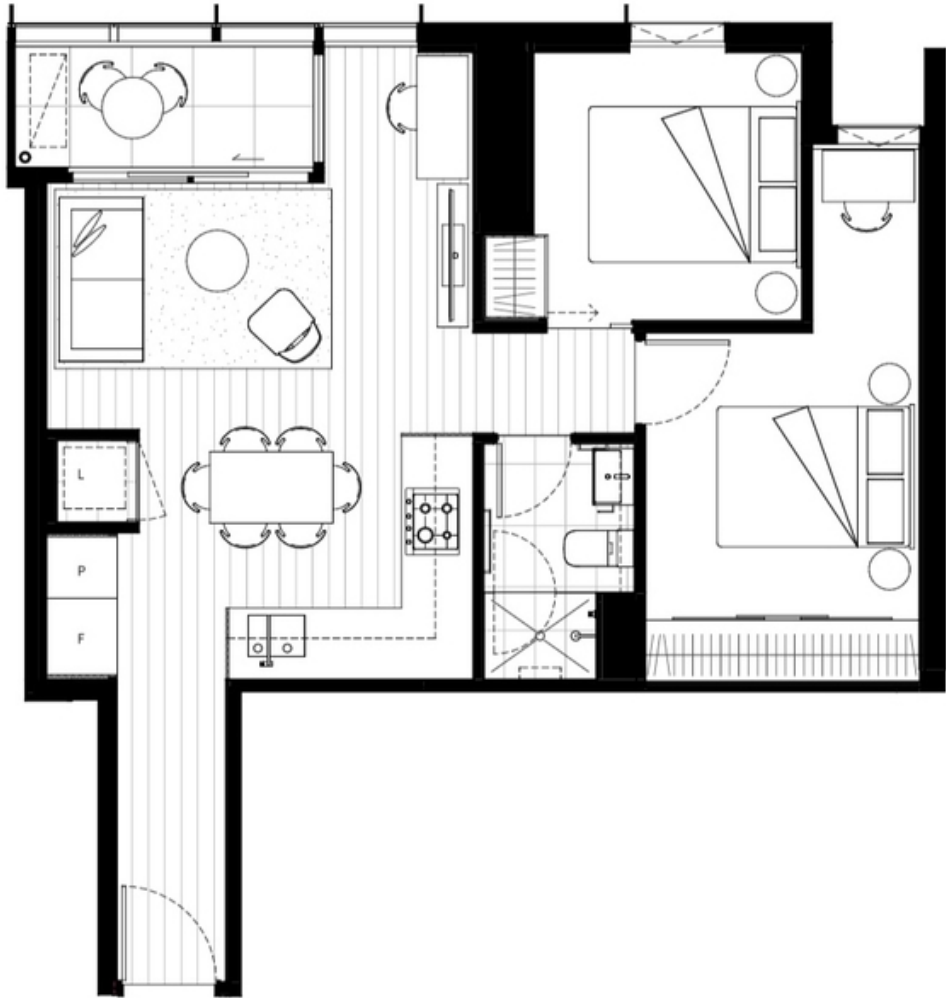
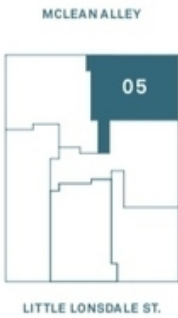
0435 770 981

E North facing, plenty sunshine

UNION TOWER

APARTMENT TYPE E

BEDROOMS	TWO
BATHROOMS	ONE
APARTMENT	56.7 M ²
BALCONY (LEVEL 2-6)	4.1 M ²
APARTMENT (7-34)	4.2 M ²
APARTMENT (LEVEL 2-6)	60.8 M ²
APARTMENT (LEVEL 7-34)	60.9 M ²



1905/296 Little Lonsdale Street MELBOURNE, VIC