



4009/568 Collins Street MELBOURNE, VIC

 1  1

## 180 Degree Breathtaking Views from Collins Tower

Located on the corner of Collins and Spencer St, and only with a short distance from Southern Cross Station, Crown Entertainment Complex, Melbourne Aquarium and multiple public transports, Collins House has been a popular and one of the best places in Melbourne CBD for a desired modern lifestyle.

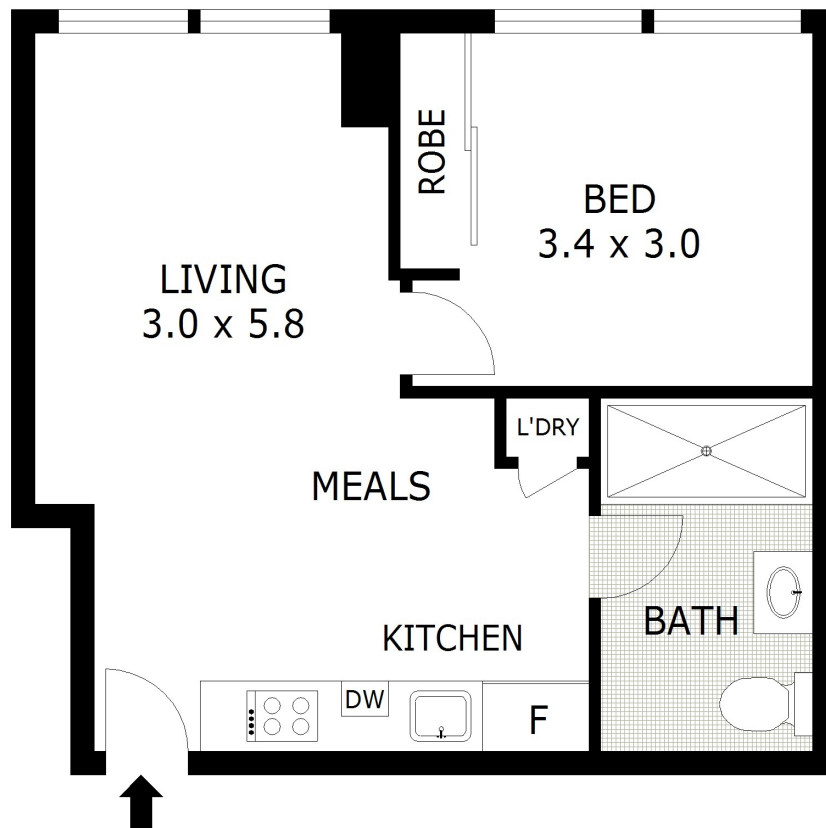
Situated on the 40th Floor with amazing Western aspect, Apartment 4009 is a lovely one-bedroom apartment which provides a convenient living style with fantastic and uninterrupted 180-degree views over the Docklands and Bay.

The luxury skyscraper also has many first-class facilities such as secure entrance, swimmi



**Gerry Wang**

0402 414 065



Scale in metres. Indicative only. Dimensions are approximate. All information contained herein is gathered from sources we believe to be reliable. However we cannot guarantee its accuracy and interested parties should rely on their own enquiries.



# 4009/568 Collins Street, Melbourne

4009/568 Collins Street

MELBOURNE, VIC