



2405/3 Yarra Street SOUTH YARRA, VIC

 2  1  1

Ultimate Entertainer with Magnificent Bay Views

****INSPECTION BY PRIVATE APPOINTMENT BETWEEN:
11:00AM-11:30AM SATURDAY 21/11/2020. PLEASE CONTACT THE
AGENT TO BOOK AN APPOINTMENT PRIOR TO ARRIVING.**

Situated right in the heart of South Yarra and only meters away from South Yarra Train Station and the bustling Chapel St shopping precinct, the luxury CENTRAL TOWER has been a fantastic location, satisfying all your needs for an envious modern lifestyle in this one of the most sought after prestigious suburbs in Melbourne.

Other features include:

Euro laundry

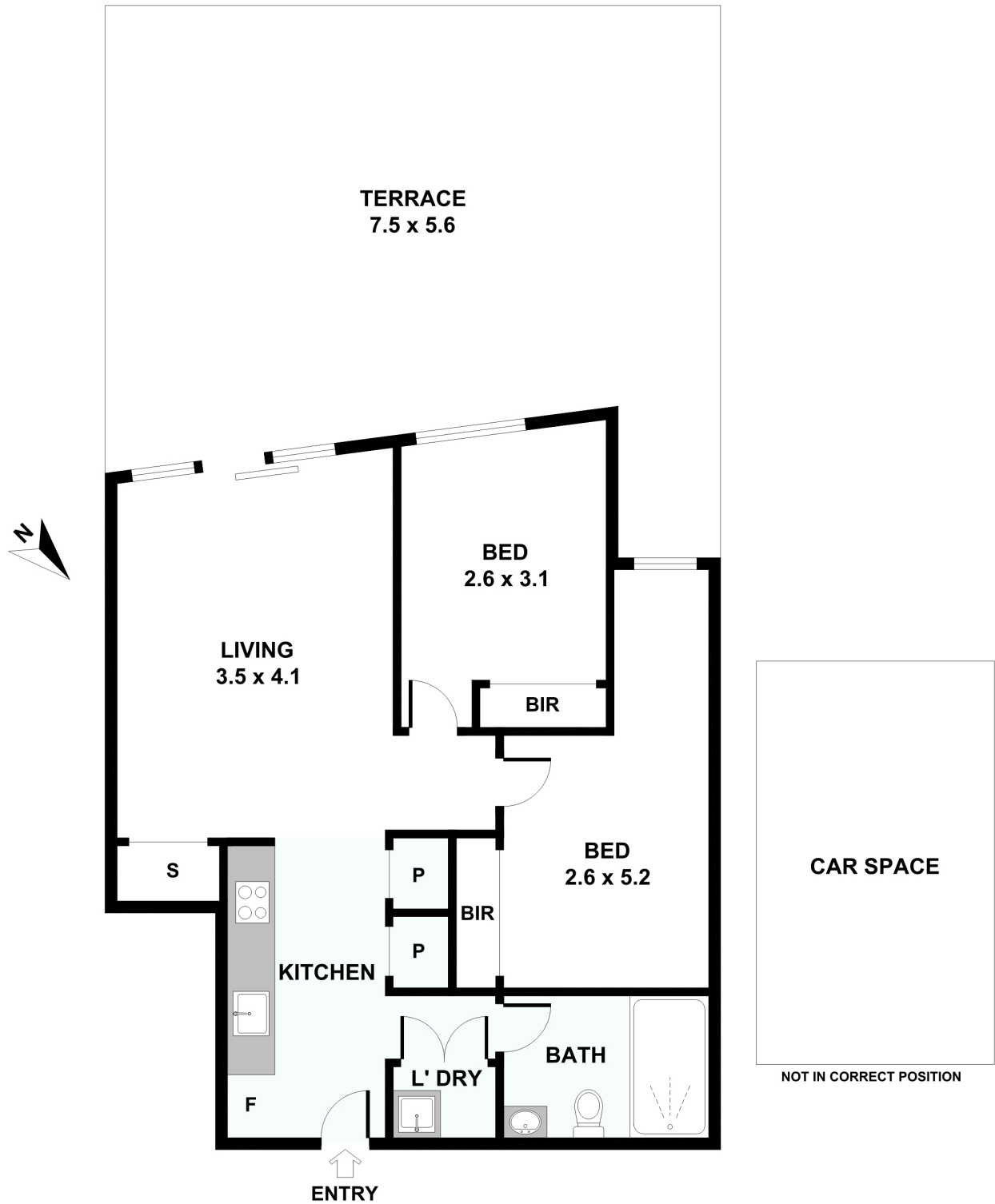
The building also includes Rooftop Terrace, communal residents lounge and kitchen, dining,



Gerry Wang

0402 414 065

2405/3 Yarra Street, South Yarra



Please note: All stated dimensions are approximate only. Particulars given are for general information only and do not constitute any representation on the part of the vendor or agent.



2405/3 Yarra Street

SOUTH YARRA, VIC