

192 Ingles Street PORT MELBOURNE, VIC

 3  3  2

Modern Inner-city Living With Ultimate Convenience

****INSPECTION BY APPOINTMENT ONLY**

Occupying a location with walking distance to shops and public transport, this triple-storey townhouse is modern, spacious and offers excellent convenience. Perfect for a busy couple or a small family looking for comfortable, secure, low-maintenance living.

Via an exquisite backyard you are entering the house with a bedroom with ensuite and locked up double garage on the ground floor.

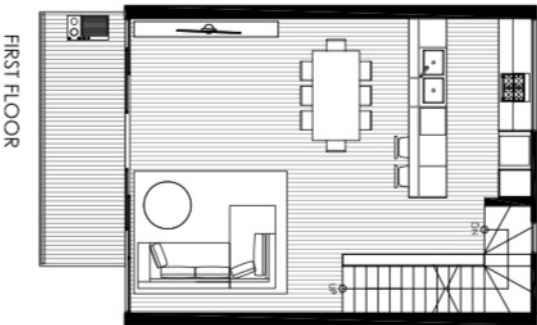
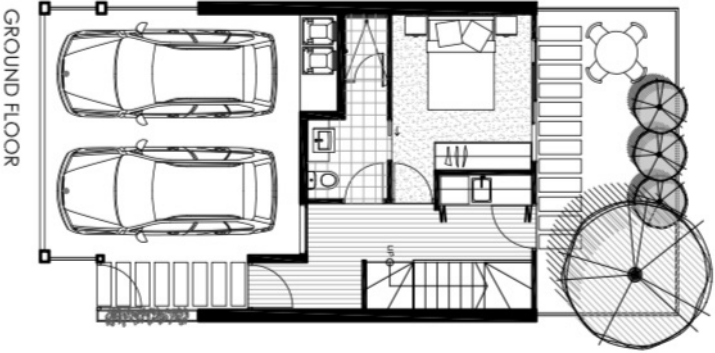
****Bonds are six weeks' rental****

*****Note: Due to the rapidly evolving COVID-19, all clients must register with agent prior**



Suzy Yao

0435 770 981



built area	176 m ²
balc. area	10 m ²
garden area	19 m ²
total area	205 m²



november 2013

All exact dimensions, elevations, areas and proportions are subject to final survey. Any furniture and fixtures shown on the plans are for illustrative purposes only. Structures shown are for preliminary purposes only and do not constitute any representation by the owner or the agent.

ANNEXURE B - LAYOUT PLAN

Type B1-A

192 Ingles Street

PORT MELBOURNE, VIC