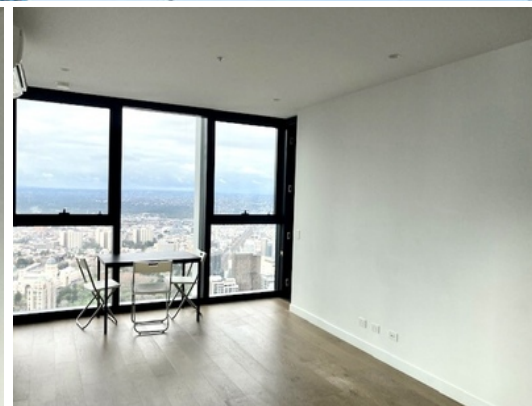
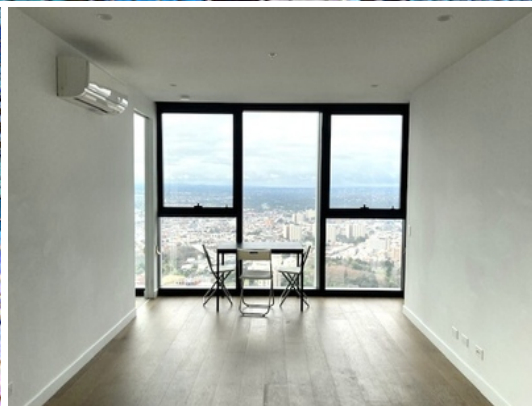




LEASED

Melpex 



7102/452-472 Elizabeth Street MELBOURNE, VIC

 3  2  1

3-Bed Apartment in Victoria One with Stunning Views

****INSPECTION BY PRIVATE APPOINTMENT BETWEEN: 11:30AM-11:45PM SATURDAY 12/12/2020. PLEASE EMAIL OR CALL THE AGENT TO BOOK AN APPOINTMENT PRIOR TO ARRIVING.**

Situated high on level 71 of the sophisticated, modern and elegant building-Victoria One, this spacious and modern 3-bedroom 2-bathroom apartment redefines city lifestyle and living, close to Melbourne's heart and soul including Queen Victoria Market and all the shops and cafes along Elizabeth Street.

Apartment features:

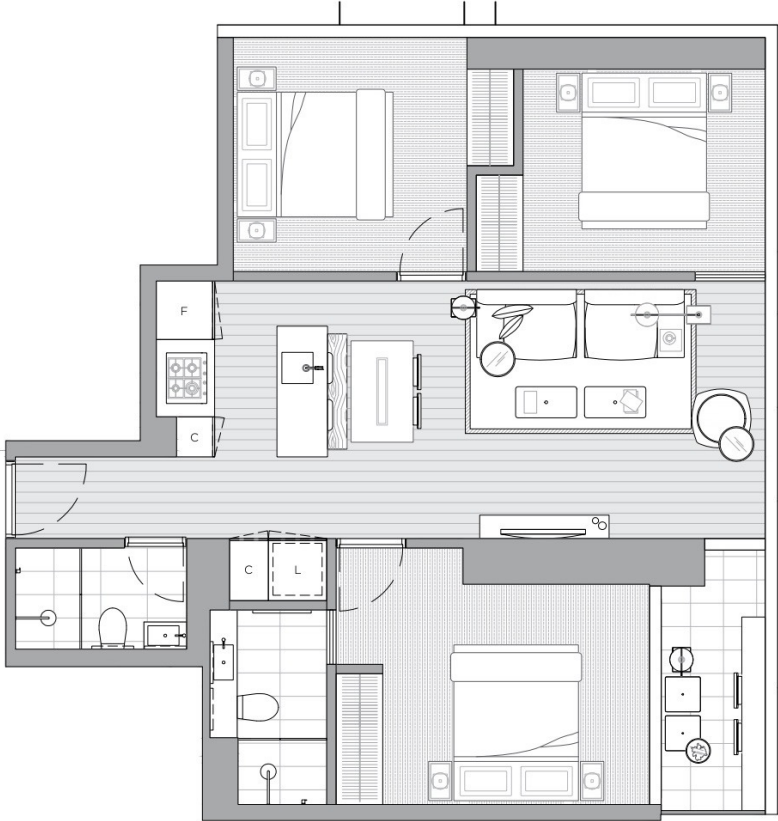
- With an internal area of approx. 77.7sqm and terrace of approx. 4.6sqm
- Partially-furnished

Building features an indoor pool and gym, private dining and living space and a club lounge



Melpex Real Estate

*Three Bedroom &
Two Bathroom
Apartment*



Not to scale

