



3519/224 La Trobe Street MELBOURNE, VIC



2



1

Stunning Two Bedroom Apartment with White Goods

****INSPECTION BY APPOINTMENT ONLY.**

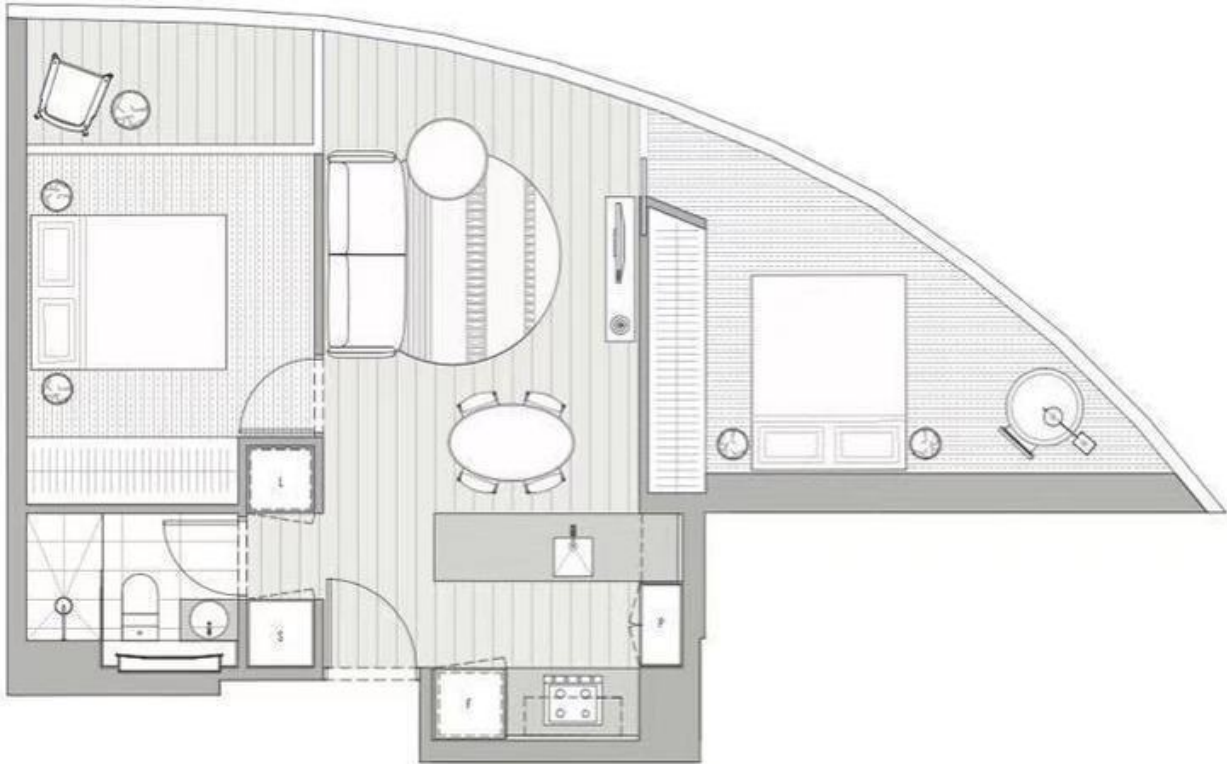
This stunning two bedroom apartment provides you with the new lifestyle all Melbournians have been longing for!

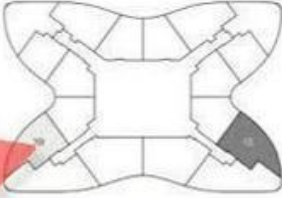
Located in the heart of the CBD, this is the only residential development within Melbourne with a direct underground connection to the Melbourne Central Train Station. Being in part of the vibrant CBD, you will find all sorts of facilities including shopping centres, bars and eateries, theatres and hotels.

A self-contained community, catering to your every need, including Private Cinema, Karaoke Room, Gymnasium, Themed Dining and Lounge Rooms, Sauna, Steam, 25m Indoor Lap Pool, Reading Lounge, Outdoor Jacuzzi, Outdoor Dining and BBQ area, Sundeck, Yoga Zone, Dance Barre,



Melplex Real Estate



LEVEL 35-65		UNIT 13 & 19	
<p>LITTLE LA TROBE STREET</p>  <p>LA TROBE STREET</p>			
2 BEDROOM / 1 BATHROOM			
APARTMENT		58.3m ²	
WINTERGARDEN		4.2m ²	
TOTAL		62.5m ²	

3519

3519/224 La Trobe Street

MELBOURNE, VIC