



4X11/380 Lonsdale Street MELBOURNE, VIC

 2  1

**Nomination sale-Completion soon-inner city luxurious living home**

This property is under nomination sale, you get the chance to save huge stamp duty. Situated in the absolute heart of the city, the shimmering towers of 380 Melbourne will incorporate a variety of residences, a boutique hotel managed by one of the world's premier luxury hotel operators, and a long list of class-leading amenities, all complemented by a selection of ground floor retail and the convenience of having the best of Melbourne on your doorstep.

Residents of 380 Melbourne will enjoy access to many state-of-the-art facilities, including:

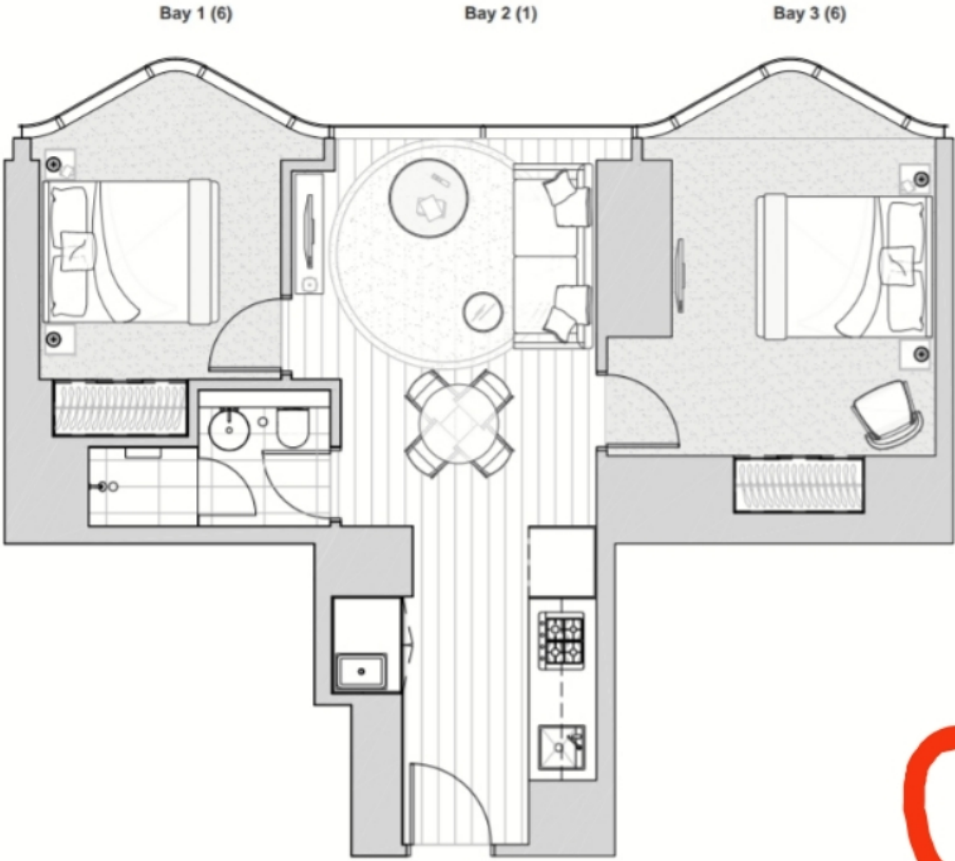
From CBD shopping to restaurants and theatres, to Australia's leading Universities, 380 Me



**Melplex Real Estate**

**APARTMENT**

2 Bedroom & 1 Bathroom  
 Apartment Type B4  
 AREA: 59.7 m<sup>2</sup>



**INDIVIDUAL APARTMENT PLAN**

Plans are indicative and may be varied in accordance with Contract of Sale. Furniture depicted is not included. Refer to the Contract of Sale for included fixtures & fittings. Areas are calculated using the Property Council of Australia's Method of Measurement for Residential Property



Revision: A Updated: 03/03/2017

