



6801/160 Victoria Street CARLTON, VIC

 1  1

North-facing Apartment With Beautiful Views In Swanston Central

Conveniently located on the corner of Victoria and Bouverie Streets, Swanston Central has already been recognised as one of the most popular occupancy targets, which connects Carlton and Melbourne CBD by simply a street.

With fantastic views, this north-facing modern one bedroom plus study apartment comprised open plan living, stylish Euro kitchen with stone island bench and stainless steel appliances, spacious study space and one bedroom with BIR.

The apartment includes highest quality features and finishes, air-conditioning and intercom system.

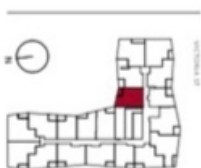
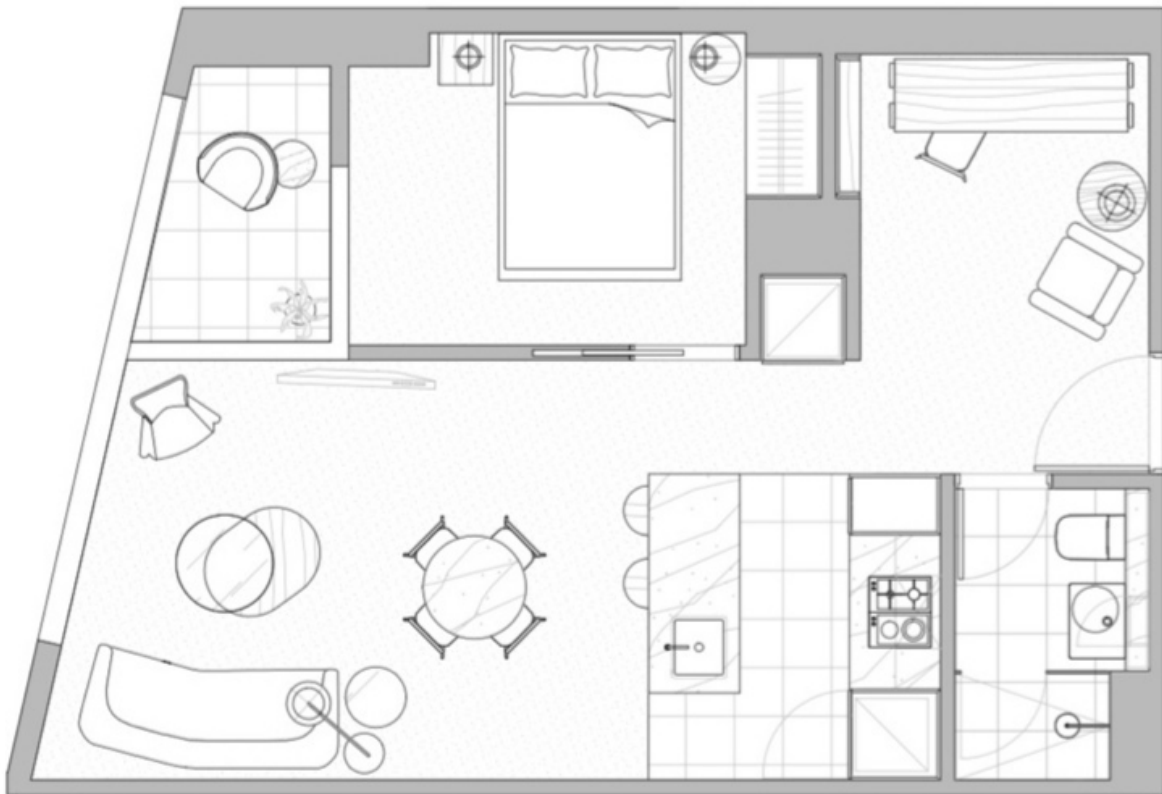
Swanton Central includes six star facilities, such as Central Club Lounge, luxury lap pool



Melplex Real Estate

APARTMENT TYPE A07.1

1 bed
1 bath
study



INTERNAL AREA	52 m ²
WINTERGARDEN AREA	4.1 m ²
TOTAL AREA	56.1 m ²

This plan was prepared before the completion of the design, engineering and construction elements of the project. The plan is intended only as a guide and an aid to further investigations by potential purchasers, and subject to change in relation to areas and dimensions, floor layout, design, engineering, fittings and specifications. Prospective purchasers should make their own enquiries and obtain their own professional advice in relation to the contract sale.

Melplex  SWANSON CENTRAL

6801/160 Victoria Street

CARLTON, VIC