



3003/285 La Trobe Street MELBOURNE, VIC

 2  1  1

Eporo: Modern Living in Envable Central Location

Situated right next to Melbourne Central and by all the fantastic amenities in Melbourne CBD, Eporo Tower is providing an urban lifestyle for its residents to an absolute ultimate level in this most sought-after location.

The property also includes Euro cupboard laundry, reverse cycle air conditioning, cooling and heating, video intercom system, and a security car park on title.

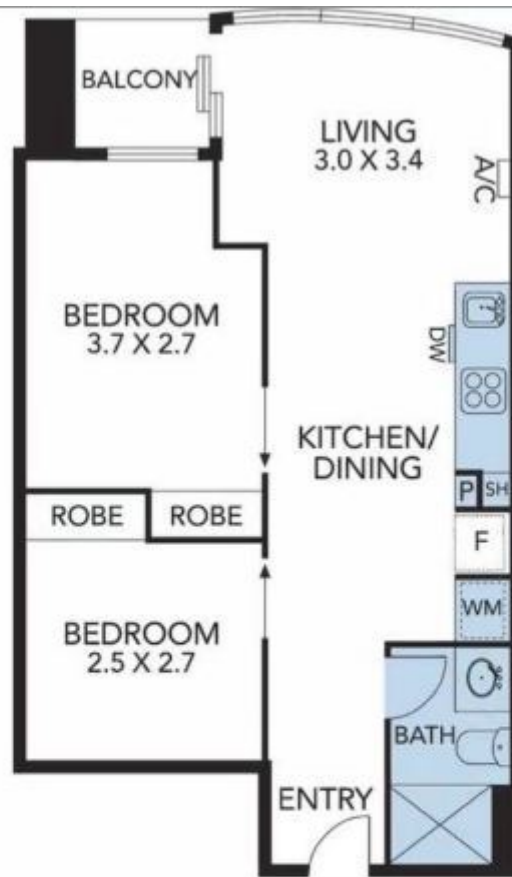
The building is equipped with fantastic facilities, such as communal entertaining, residents lounge, kitchen and dining zone and cinema.

With countless shops, restaurants, supermarkets and multiple public transports simply all downstairs, the property will definitely tick all your boxes and end your property search



Gerry Wang

0402 414 065



APPROX TOTAL AREA: 54 SQMS
(INCLUDES BALCONY)

