

7605/224 La Trobe Street MELBOURNE, VIC

 2  2  1

Brand New 2-Bed 2-Bath Apartment in The Heart of Melbourne

This brand new stunning two bedroom apartment provides you with the new lifestyle all Melbournians have been longing for!

Located in the heart of the CBD, this is the only residential development within Melbourne with a direct underground connection to the Melbourne Central Train Station. Being in part of the vibrant CBD, you will find all sorts of facilities including shopping centres, bars and eateries, theatres and hotels.

Apartment features?

- * Open-plan living and dining
- * Modern central bathroom

Aurora building features a self-contained community, catering to your every need, includin

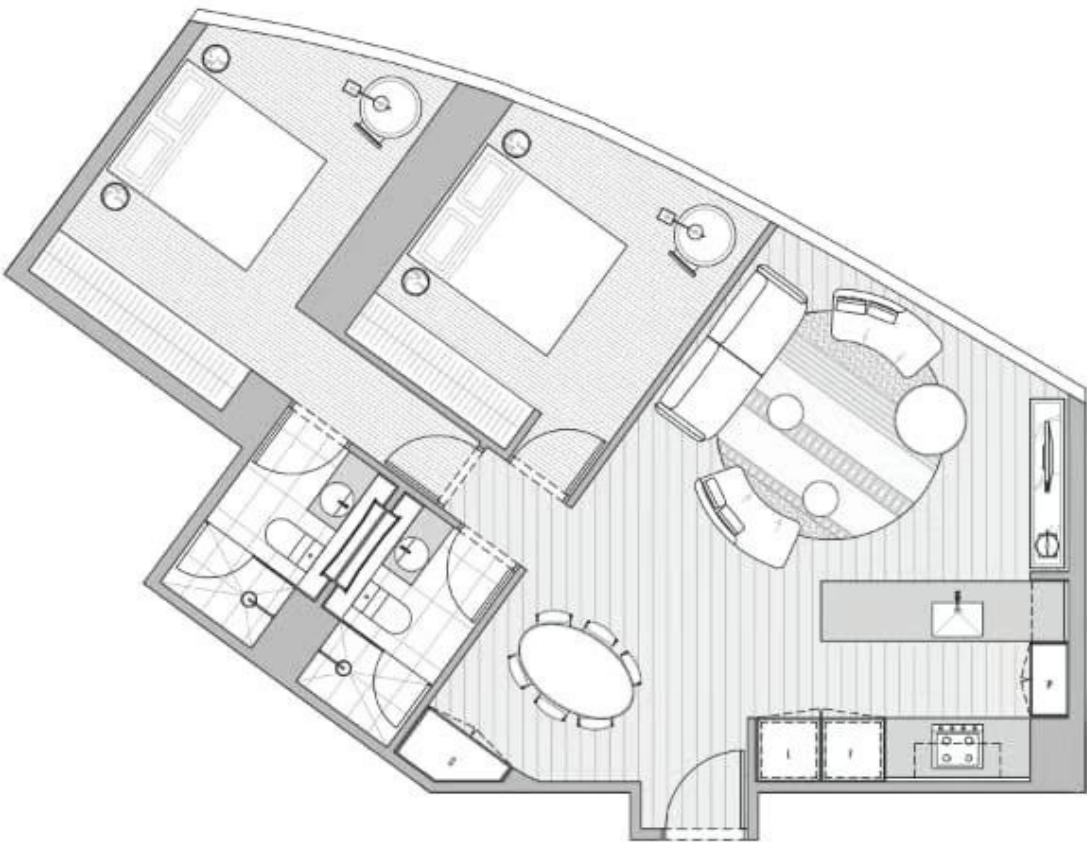


Melplex Real Estate



THE AUSTRALIS COLLECTION

APARTMENT TYPE C6



7605/224 La Trobe Street

| LEVEL 67 | | UNIT 05 | |
|---|--------------------------|--|--|
|  | |  | |
| MELBOURNE, VIC | | | |
| 2 BEDROOM / 2 BATHROOM | | | |
| APARTMENT | 75.2m ² | | |
| WINTERGARDEN | 0.0m ² | | |
| TOTAL | 75.2m² | | |

| LEVEL 68-91 | | UNIT 05 | |
|---|--------------------------|---|--|
|  | |  | |
| MELBOURNE, VIC | | | |
| 2 BEDROOM / 2 BATHROOM | | | |
| APARTMENT | 75.6m ² | | |
| WINTERGARDEN | 0.0m ² | | |
| TOTAL | 75.6m² | | |