






8/9-13 Margaret Street CLAYTON VIC

4  3  1 

This stunning double story townhouse features open plan living area plus multiple bedrooms as well as a sun-filled entertaining courtyard.

Other features include:

- ? Timber floor in living area, carpet in bedrooms
- ? Modern kitchen with stone bench and stainless steel appliances
- ? Alarm system
- ? Video intercom
- ? Heating and cooling unit combined with inverter reverse cycle
- ? 6 star energy compliance

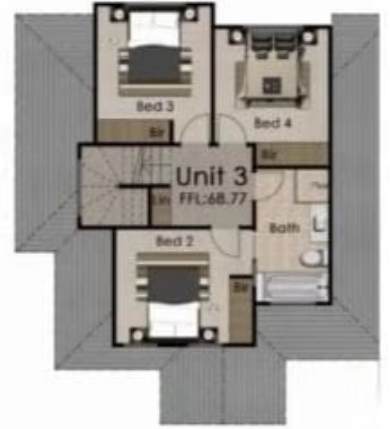
Type : Townhouse

Price : \$ 700

View : <https://www.melplex.com.au/lease/vic/east/clayton/residential/townhouse/5225840>

[For full version visit the website](https://www.melplex.com.au)

3/9-13 MARGARET STREET
CLAYTON, VIC



UNIT 3
Ground
First Floor
TOTAL

106 sqm
53 sqm
159 sqm

This document has been prepared for marketing purposes only. The Agent or Developer (as not warranted) neither expressly or impliedly, the accuracy or completeness of the information contained in this document. All interested parties should make their own enquiries and consult their professional adviser as to the true representations contained in this document and its accuracy. The Agent or Owner, to the extent permitted by law, is not liable for loss or damage arising from any reliance placed on this document.