



3508/224 La Trobe Street MELBOURNE, VIC

 2  1

## North Facing Two Bedroom with Lots of Storage Space

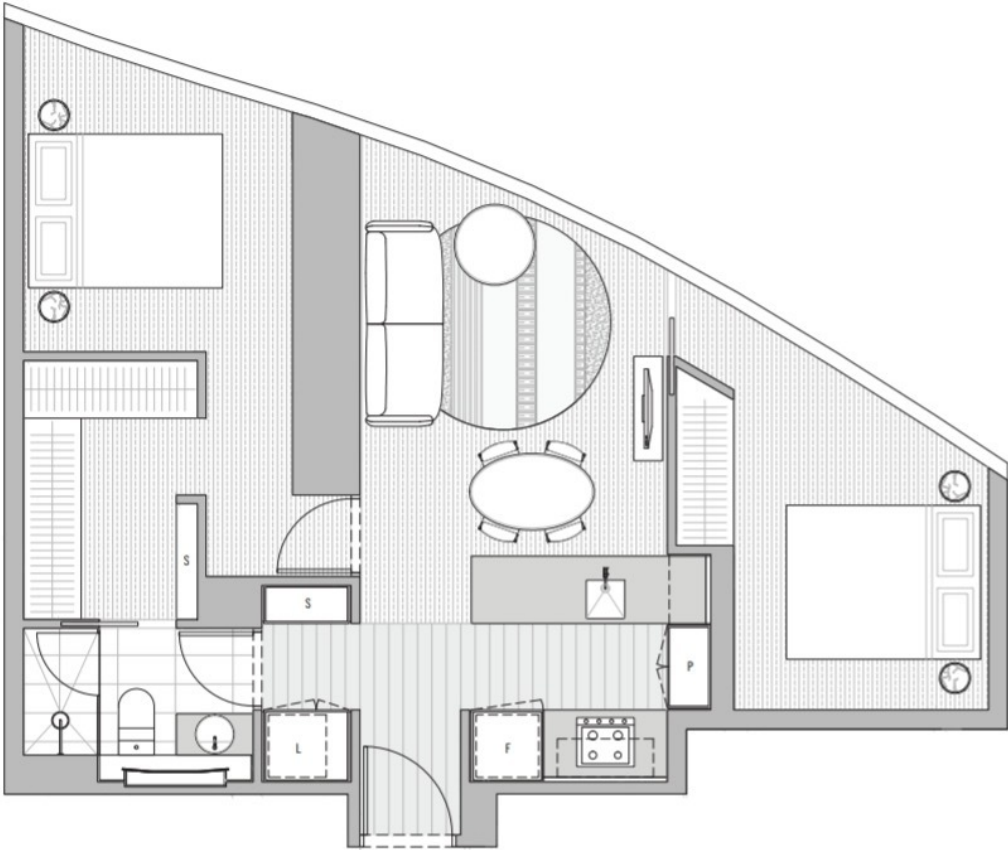
This stunning two bedroom apartment provides you with the new lifestyle all Melbournians have been longing for!

Located in the heart of the CBD, this is the only residential development within Melbourne with a direct underground connection to the Melbourne Central Train Station. Being in part of the vibrant CBD, you will find all sorts of facilities including shopping centres, bars and eateries, theatres and hotels.

\*\* Photos are for advertising purposes only\*\*  
 \*\* Bonds are six weeks' rental\*\*



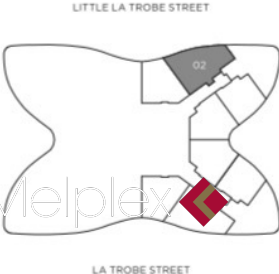
**Melplex Real Estate**



**North facing Direction:  
plenty of sunshine  
(朝北户型, 阳光充足)**

3508/224 La Trobe Street

MELBOURNE, VIC

LEVEL 10-31		UNIT 02	
			
2 BEDROOM / 1 BATHROOM			
APARTMENT		58.6m <sup>2</sup>	
BALCONY		0.0m <sup>2</sup>	
TOTAL		58.6m <sup>2</sup>	