



1417/339 Swanston Street MELBOURNE, VIC



2



1

Spacious Two Bedroom Apartment in the Heart of Melbourne CBD

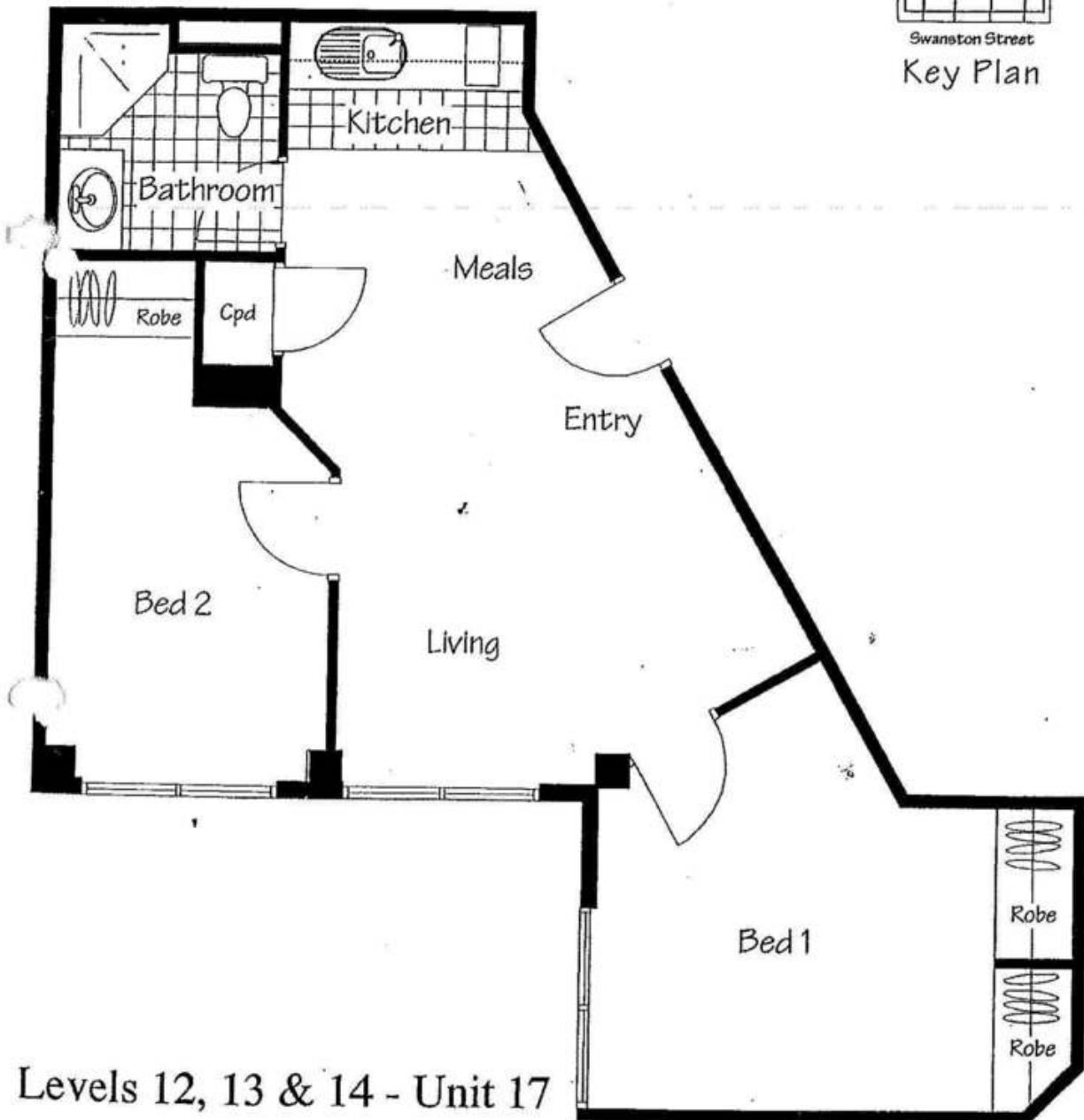
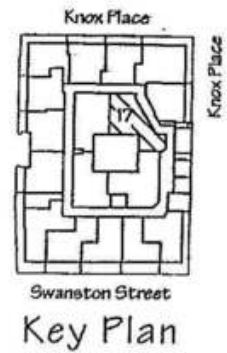
Situated right in the heart of Swanston St and most importantly conveniently located well within walking distance to Melbourne Central, RMIT, State Library, QV, shops and caf?, not to mention multiple public transport access to all direction right at your doorstep.

With an internal area of approx 53sqm, this two-bedroom apartment is on the 14th floor of the UniLodge on Swanston. Apartment featuring open plan living and dining, two good sized bedrooms with window and BIRs, one bathroom, as well as kitchen with gas cook top.

Melplex 

Melplex Real Estate

1417



Levels 12, 13 & 14 - Unit 17