



106/392 Spencer Street WEST MELBOURNE, VIC

 2  2  1

## Contemporary Living with Historic Charm

Situated right on the vibrant Spencer St on the Western Edge of Melbourne CBD and only about one year new, Bond Quarter, being a boutique residential tower, has been providing its residents with fantastic convenience and high-quality living standards in this one of the most sought after locations.

Also features: high ceiling, timber floor boards, split system air-conditioning, intercom system and one car park on title plus a storage cage.

Built on the existing facade, Bond Quarter Tower has inherited the historical architecture and successfully matched the local style of neighbourhood surroundings. Positioned on the edge of Melbourne CBD, it is within walking distances to a series of best facilities, such as Flagstaff Gardens, multiple tram lines, Southern Cross Train Station, Queen Victoria






**Gerry Wang**


0402 414 065



# Apartment Type 2F

2  2  1 

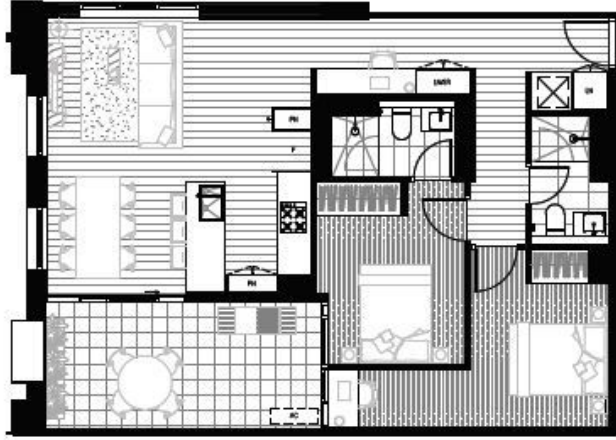
INTERNAL AREA (m <sup>2</sup> )	80
BALCONY AREA (m <sup>2</sup> )	15
<b>TOTAL AREA (m<sup>2</sup>)</b>	<b>95</b>



ST BMC EAST TREET

**LEVELS**  
1

**APARTMENTS**  
1.04



[BONDQUARTER.COM.AU](http://BONDQUARTER.COM.AU)
 alpha14
 hayball

Please note that the floor plan is provided prior to completion of construction and is not intended to be used as a guide. Changes may be made during the construction process. The furniture, fittings, fixtures and appliances are subject to change without notice in accordance with the provisions of the Contract of Sale. The furniture and fittings are not included in the sale and should not be taken into account. The final position of the furniture, TV, air conditioning units and the like, together with the appliances, may vary from the floor plan. It is recommended that you check the floor plan and furniture and fittings list at all times in relation to the Property. Contact us with all the information for our best service.



**BOND  
QUARTER**

SPENCER ST. • MELBOURNE

V2206