



704/139 Bourke Street MELBOURNE, VIC

 1.5  1

A Perfect Gem at the Metropolitan

Situated at the top end of Bourke Street in central Melbourne CBD, this lovely and spacious one-bed plus study apartment enjoys great location and convenience plus with inner city living at its best.

Boasting open plan living flowing through to a decent sized undercover balcony ideal for extended and relaxed entertaining.

Sleek kitchen fully equipped with integrated appliances incorporating gas stove, electric oven and ample cupboard spaces.

Also features: air-conditioning and intercom system.

Just a short stroll to RMIT, Melbourne Central, Bourke Shopping Mall, Chinatown and a fantastic array of retail shops, restaurants, cafes and bars, with free public transport at yo



Gerry Wang

0402 414 065

METROPOLITAN

137 BOURKE STREET MELBOURNE

APARTMENT

1.04, 2.04, 3.04, 4.04, 5.04, 6.04, 7.04, 8.04,
9.04, 10.04, 11.04, 12.04

INTERNAL AREA

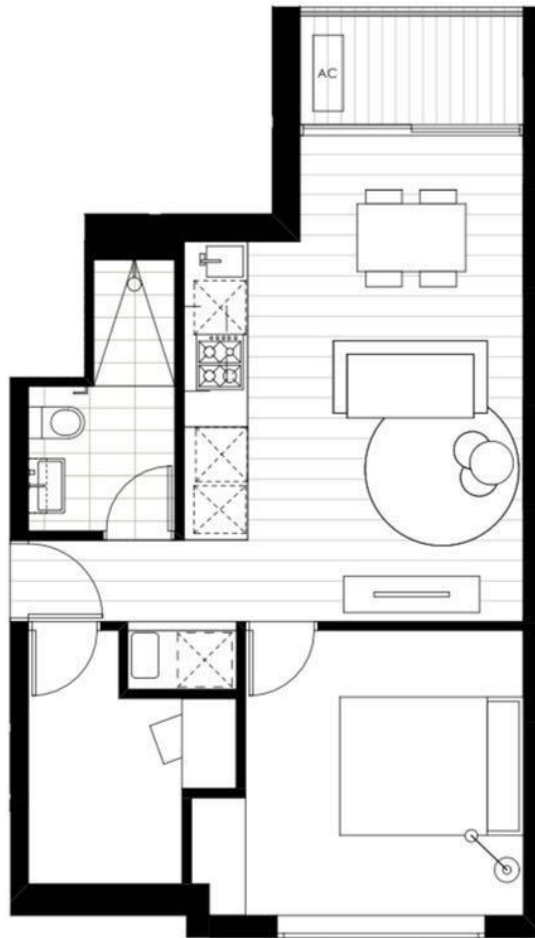
47m²

EXTERNAL AREA

3.5m²

TOTAL AREA

50.5m²



highlight window

LEVELS 1 - 12

BOURKE STREET



The information on this floor plan is believed to be correct but is not guaranteed, it is illustrative only and may not be relied upon. Apartment size is measured in accordance to the Property of Australia's Method of Measurement for Residential Property. Dimensions and areas are approximate and are subject to change without notice. Final area dimensions of any apartment sold will be determined by the contract of sale and may differ from that depicted. Prospective purchasers must rely on their own enquiries to satisfy themselves on all aspects of the development and should refer to the plans, terms and conditions contained in the contract of sale.

Details may be amended as required by authorities and structural or services requirements. Loose furniture, white goods and planters are not included. Extent of floor finishes may vary. Whilst every effort is made to provide accurate and complete information, the developer does not warrant or represent that the information in this floor plan is free from errors or omissions or is suitable for your intended use. Subject to any terms implied by law which cannot be excluded, the developer accepts no responsibility for any loss, damage, cost or expense (whether direct or indirect) by you as a result of any error or omission or misrepresentation in information. All information is subject to change without notice.



704/139 Bourke Street

MELBOURNE, VIC