


Melplex Melplex Melplex Melplex 

1812/250 Elizabeth Street MELBOURNE, VIC



1



1

## Spacious apartment with gas and water included

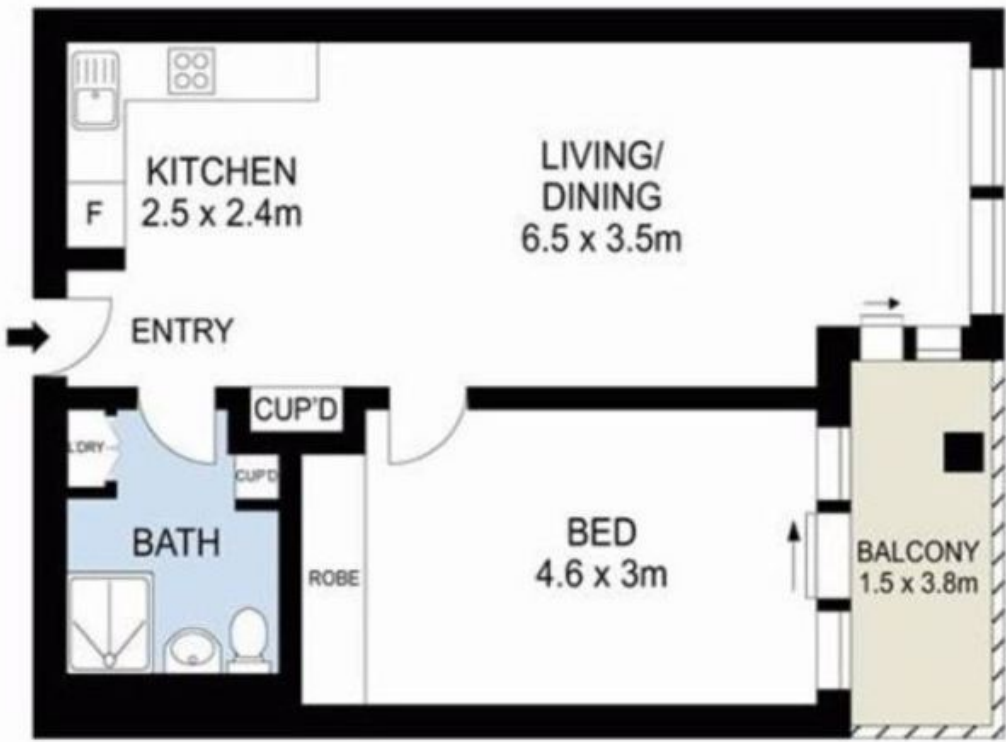
Situated literally in the heart of Melbourne CBD, this bright and generous one bedroom apartment on the 18th floor of the famous Somerset Tower is now available as a great opportunity for someone to fully enjoy a convenient lifestyle.

Completely and freshly painted, Apartment 1812 is unfurnished, but has been fully renovated with timber floor board, new carpet, new appliances and new bathroom just recently.

It comprises open plan living, L-Shaped kitchen with stainless steel appliances and gas top, large double bedroom with BIRs, good-sized bathroom with new shower screen and separate laundry.

Right at the corner of Elizabeth St and Lonsdale St, Somerset Tower is located in an envio

Melplex 
**Melplex Real Estate**



0 1 2 3 4 5  
Scale in metres. Indicative only. Dimensions are approximate.

