



3519/224 La Trobe Street MELBOURNE, VIC

 2  1

Brand New Stunning Two Bedroom Apartment in Melbourne CBD

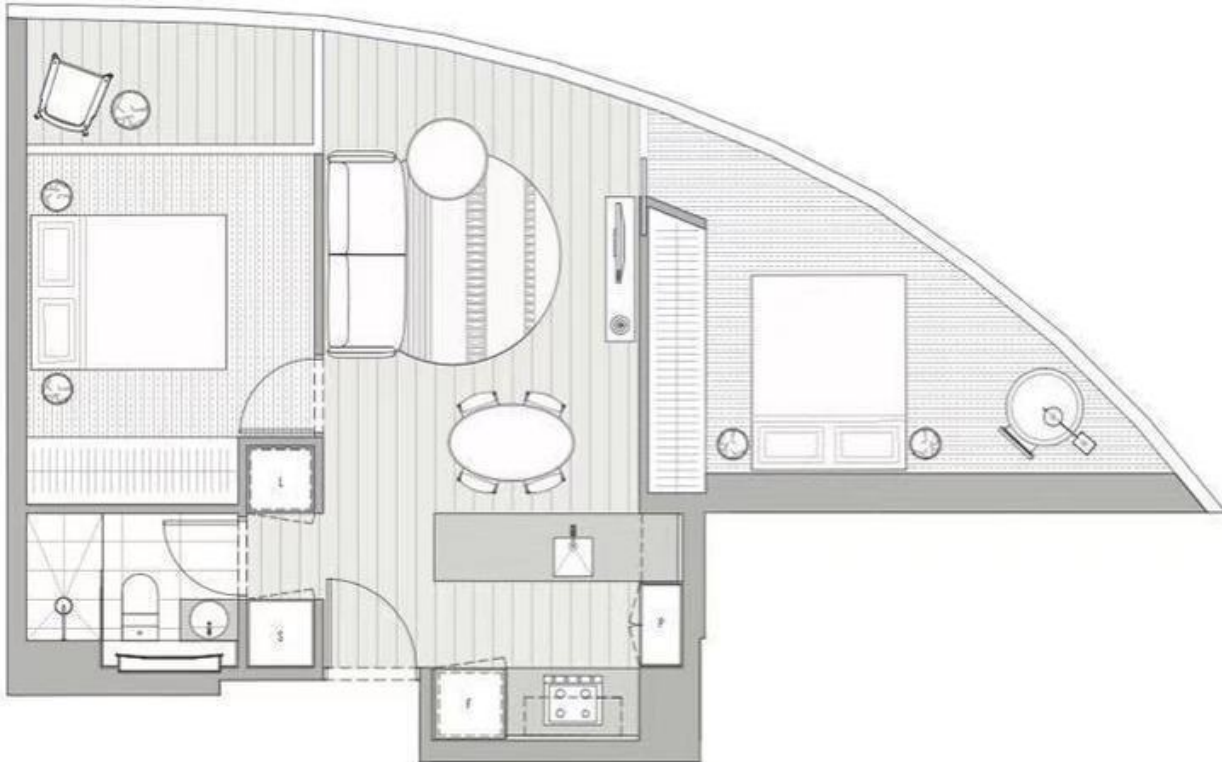
This brand new stunning two bedroom apartment provides you with the new lifestyle all Melbournians have been longing for!

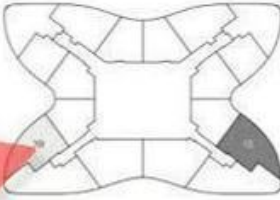
Located in the heart of the CBD, this is the only residential development within Melbourne with a direct underground connection to the Melbourne Central Train Station. Being in part of the vibrant CBD, you will find all sorts of facilities including shopping centres, bars and eateries, theatres and hotels.

*** Photos are for advertising purposes only***

Melplex 

Melplex Real Estate



LEVEL 35-65		UNIT 13 & 19	
<p>LITTLE LA TROBE STREET</p>  <p>LA TROBE STREET</p>			
2 BEDROOM / 1 BATHROOM			
APARTMENT	58.3m ²		
WINTERGARDEN	4.2m ²		
TOTAL	62.5m ²		

3519

3519/224 La Trobe Street

MELBOURNE, VIC