

224 La Trobe Street MELBOURNE, VIC

 1  1

### One-bed Aurora Opportunity in the heart of CBD

This lovely one bedroom apartment has great natural light, it comprises of open plan living, Euro kitchen fully equipped with stainless steel appliances, stone island bench, stylish bathroom, Euro Laundry, large bedroom with BIRs.

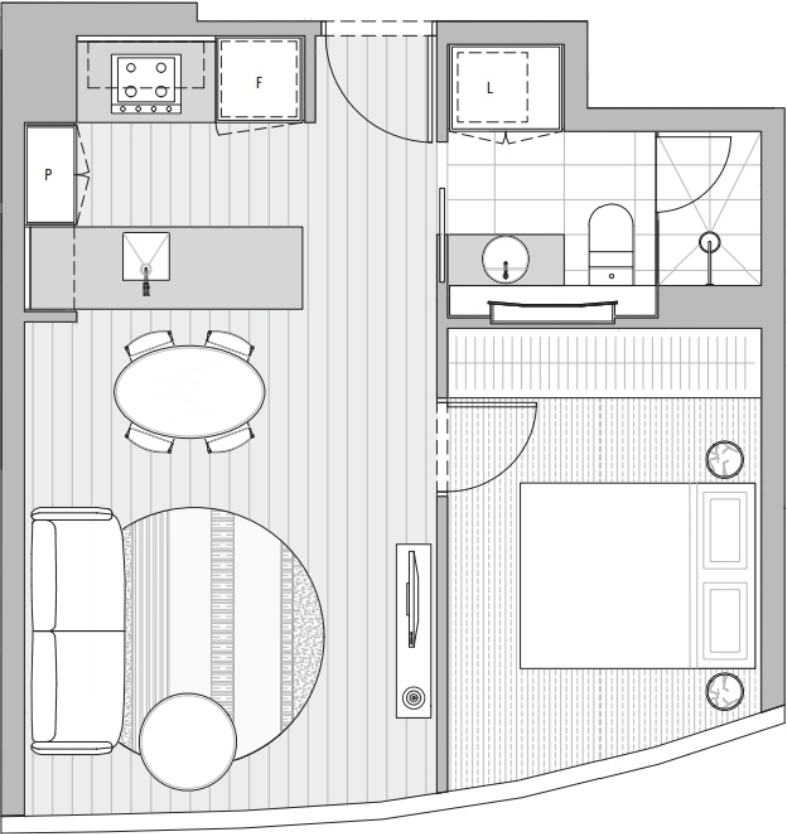
Aurora, the highest Iconic Building in Melbourne, is strategically situated in the middle of La Trobe St, with direct connect to Melbourne Central Shopping Centre, Emporium, Bourke St, Mall and only about a few minute walk to State Library, RMIT, Melbourne Uni and well within the Free Tram Zone.



**Melplex Real Estate**



APARTMENT TYPE A2



224 La Trobe Street

MELBOURNE, VIC

