



Level 35/224 La Trobe Street MELBOURNE, VIC

 1  1  1

One of the Last Opportunities from the Hot Aurora

Sitting on Level 35th of Aurora with the most sought-after West-Northerly Aspect, this lovely one bedroom apartment is now available for a lucky purchaser to either occupy or invest in a very short time as a fantastic opportunity.

With magnificent views towards the Melbourne CBD, it comprises of open plan living, Euro kitchen fully equipped with stainless steel appliances, stone island bench, stylish bathroom, Euro Laundry, large bedroom with BIRs and general winter garden.

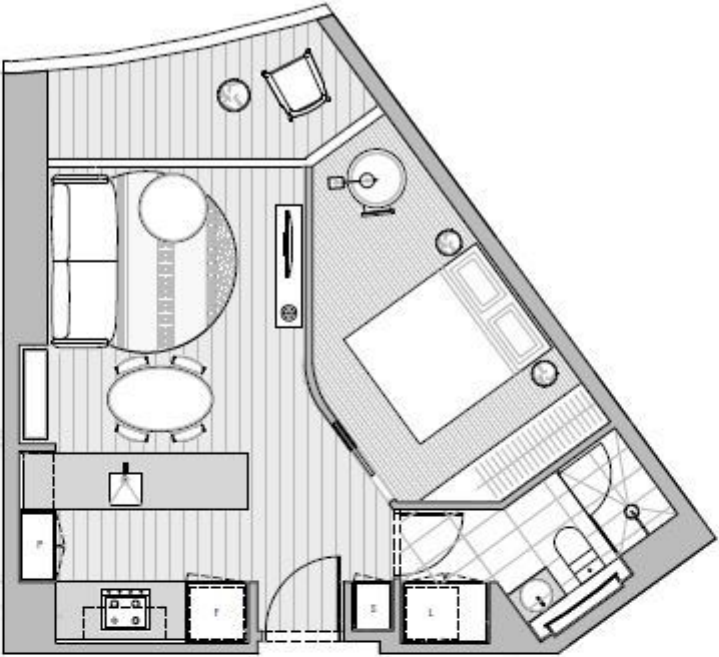
Also features, air-conditioning, intercom, one security car park and a storage cage.

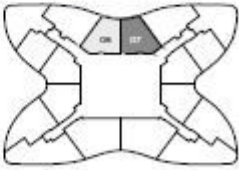
Aurora, well recognised as the highest Iconic Building in Melbourne, is strategically situ



Gerry Wang

0402 414 065



LEVEL 35-65		UNIT 06 & 07	
<div>LITTLE LA TROBE STREET</div> <div></div> <div>LA TROBE STREET</div>			
1 BEDROOM / 1 BATHROOM			
APARTMENT		43.1 m ²	
WINTERGARDEN		5.6m ²	
TOTAL		48.7m ²	