



Level 43/224 La Trobe MELBOURNE, VIC

 1  1  1

Simply Hot at Aurora

Situated on Level 43rd of Aurora with the most sought-after South-Western Aspect, this lovely one bedroom apartment is now available for either an astute investor or a first home owner to take over as a fantastic opportunity.

With magnificent views across Melbourne Central, it comprises of open plan living, Euro kitchen fully equipped with stainless steel appliances, stone island bench, stylish bathroom, Euro Laundry, large bedroom with BIRs.

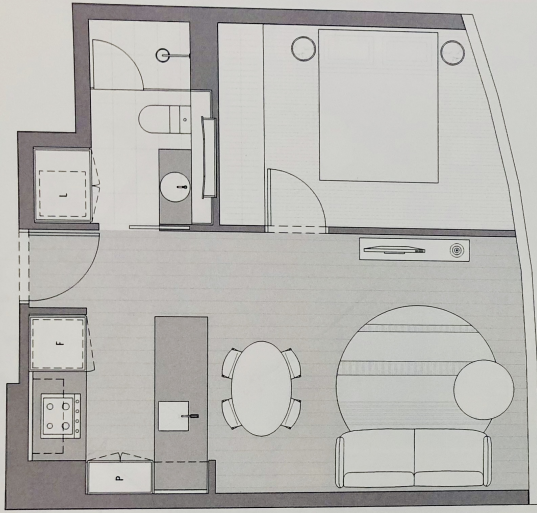
Also features, air-conditioning, intercom, one security car park and a storage cage.

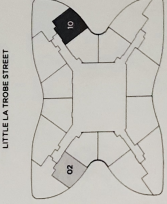
Aurora, the highest Iconic Building in Melbourne, is strategically situated in the middle of La Trobe St, with direct connect to Melbourne Central Shopping Centre, Emporium, Bourke



Gerry Wang

0402 414 065



LEVEL 35-65	UNIT 02 & 10
	
1 BEDROOM / 1 BATHROOM	
APARTMENT	42.9m ²
WINTERGARDEN	0.0m ²
TOTAL	42.9m²