



Level 57/224 La Trobe St MELBOURNE, VIC

 1  1

Aurora with the Most Sought-After Eastern Aspect

Situated in the middle of La Trobe St and the absolute heart of Melbourne CBD, Aurora, has been the most sought after residential target for Melbournians. Designed as the only tower with direct connect to Melbourne Central Shopping Centre and Train Station, Aurora is within walking distances to all the CBD amenities including Emporium, Bourke St, Mall, State Library, RMIT, Melbourne University.

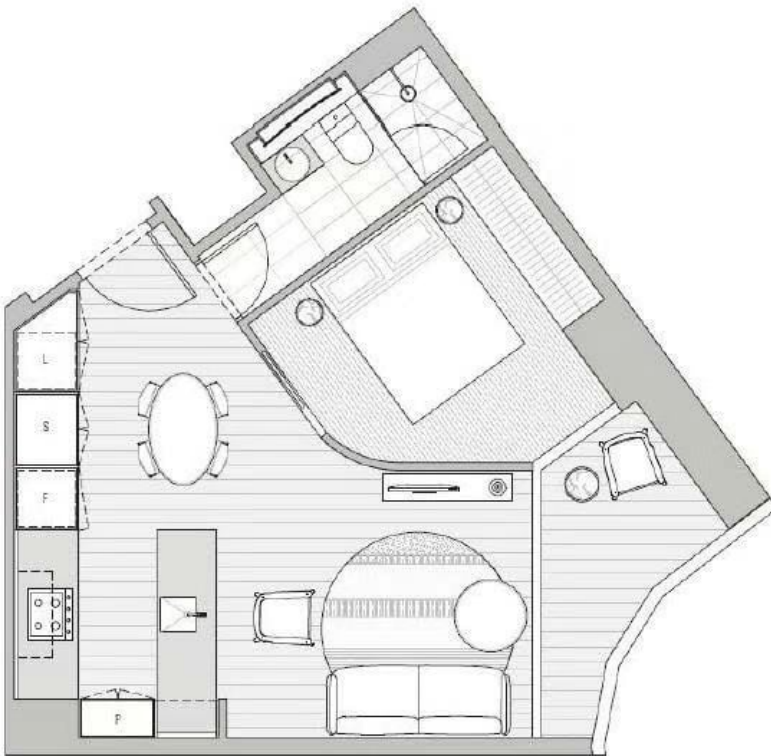
Situated on the 57th floor, this lovely one bedroom apartment is now available for either an astute investor or a first home owner to take over as a fantastic opportunity.

Current owner is seeking a nominee to take over the existing purchase with massive stamp d

Melplex 

Gerry Wang

0402 414 065



1 Bed/1 Bath
East Facing
44.1sqm Internal
5.1sqm Balcony

