



Level 57/224 La Trobe St MELBOURNE VIC

1  1 

Situated in the middle of La Trobe St and the absolute heart of Melbourne CBD, Aurora, has been the most sought after residential target for Melbournians. Designed as the only tower with direct connect to Melbourne Central Shopping Centre and Train Station, Aurora is within walking distances to all the CBD amenities including Emporium, Bourke St, Mall, State Library, RMIT, Melbourne University.

Type : Apartment
View : <https://www.melplex.com.au/sale/vic/inner-city/melbourne/residential/apartment/4804387>

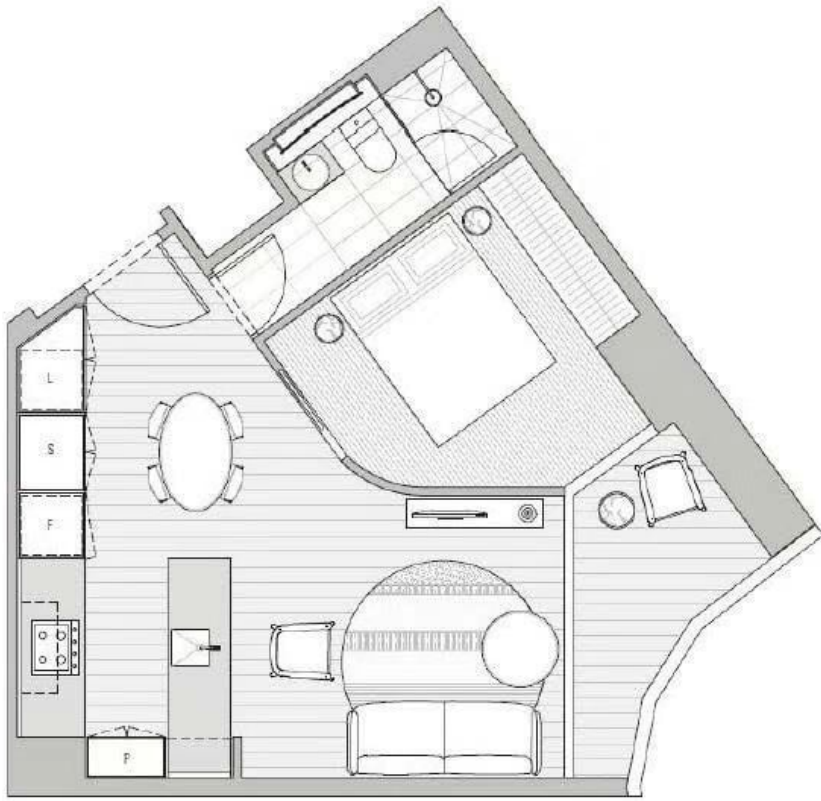
Situated on the 57th floor, this lovely one bedroom apartment is now available for either an astute investor or a first home owner to take over as a fantastic opportunity.



Gerry Wang
 03 9041 4959

Overlooking Swanston St with great natural light, it comprises of open plan living, Euro kitchen fully equipped

[For full version visit the website](https://www.melplex.com.au)



1 Bed/1 Bath
East Facing
44.1sqm Internal
5.1sqm Balcony

