



105/405 Neerim Road CARNEGIE, VIC

 2  2.5  2

Sun-filled Loft Style in Portrait

Only recently completed, Portrait offers a bold selection of thoughtfully crafted residences designed to suit modern lifestyles in this fast growing suburb, Carnegie.

Apartment 105 is a double storey loft style apartment, comprising two levels of spacious living space, with a total approximate size of 90sqm.

Downstairs are the open living area, L-shaped kitchen fully equipped with European stainless steel appliances, added with an enclosed study and a powder room, providing great convenience to guest and work, plus the full width balcony with fantastic Northerly natural light.

With only 12km from the Melbourne CBD, Carnegie offers both brilliant location and lifestyle



Gerry Wang

0402 414 065

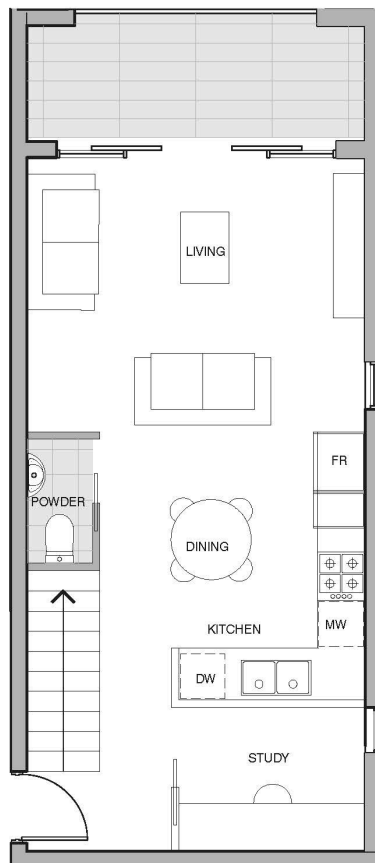
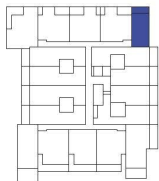


level 01 — apartment 05

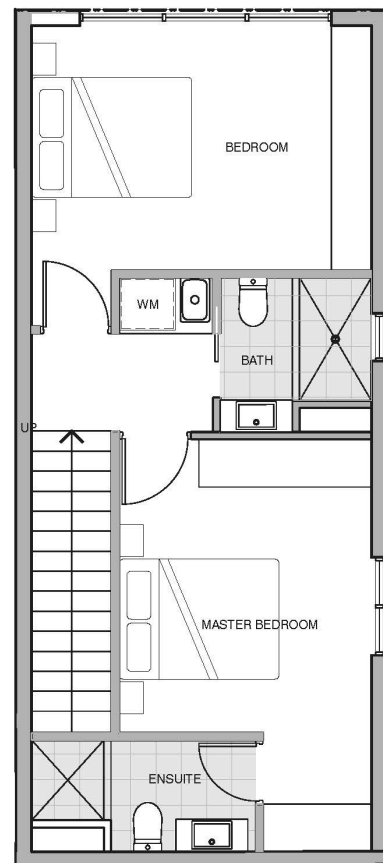
2 bedroom, 2 bathroom, 1 study,
1 powder room & 2 carpark

| | |
|---------------------|--------------------|
| Bedroom | 2 |
| Bathroom | 2 |
| Carpark | 2 |
| Floor area | 83.0m ² |
| Balcony area | 7.0m ² |
| Total area | 90.0m ² |

0 0.5 1 2 3m



Lower Level



Upper Level

Note: Plans are indicative only and may differ slightly as a result of documentation and construction. Sizes may vary. Furniture is not included in package. Landscaping shown is indicative only. Areas are approximates only. Measurements may vary depending on methodology used.