

Level 45/224 La Trobe Street MELBOURNE, VIC

 2  2  1

Aurora's Most Sought-after Southern Aspect

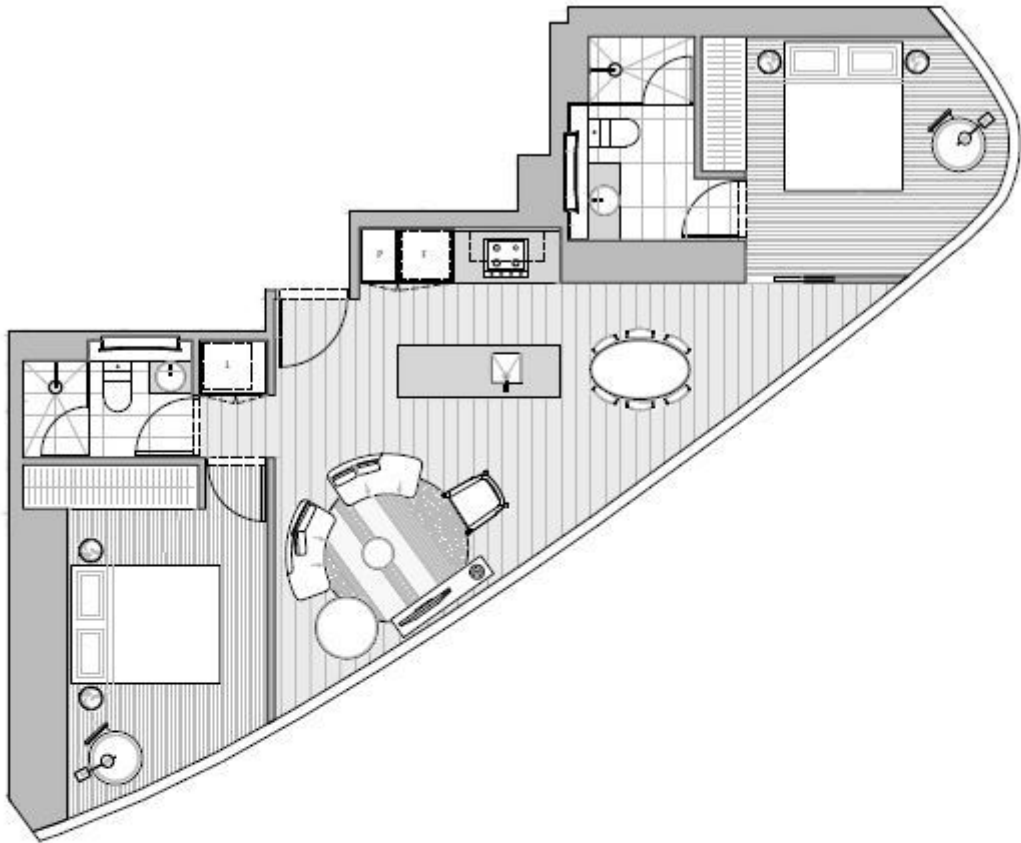
Situated on the 48th floor of the most popular Aurora Tower and overlooking Melbourne Central with magnificent uninterrupted Southern views, the beautiful two bedroom apartment comprises of open plan living, Euro kitchen fully equipped with stainless steel appliances and stone island bench, stylish bathroom, Euro Laundry, two double bedrooms, master with full ensuite, second bedroom with BIRs and Euro laundry.

Being currently one of the most sought-after residential towers in the heart of Melbourne CBD and the highest Iconic Residential Building, Aurora will remain a hot target for residents, in many years to come.



Melplex Real Estate Gerry Wang

0402 414 065



LEVEL 35-65 UNIT 15 & 18	
	
2 BEDROOM / 2 BATHROOM	
APARTMENT	69.4 m ²
WINTERGARDEN	0.0 m ²
TOTAL	69.4 m ²