

3802/170 Victoria Street CARLTON, VIC

 2  1

Swanston Central: A Best in the Academic Neighbourhood

Swanston Central: one of Melbourne's finest residential projects is now near settlement and here is a rare opportunity for you to take advantage of ownership without having to wait any longer.

Conveniently located on the corner of Victoria and Bouverie Streets, the anxiously awaited luxury tower has already been recognised as one of the most popular occupancy targets, which connects Carlton and Melbourne CBD by simply a street.

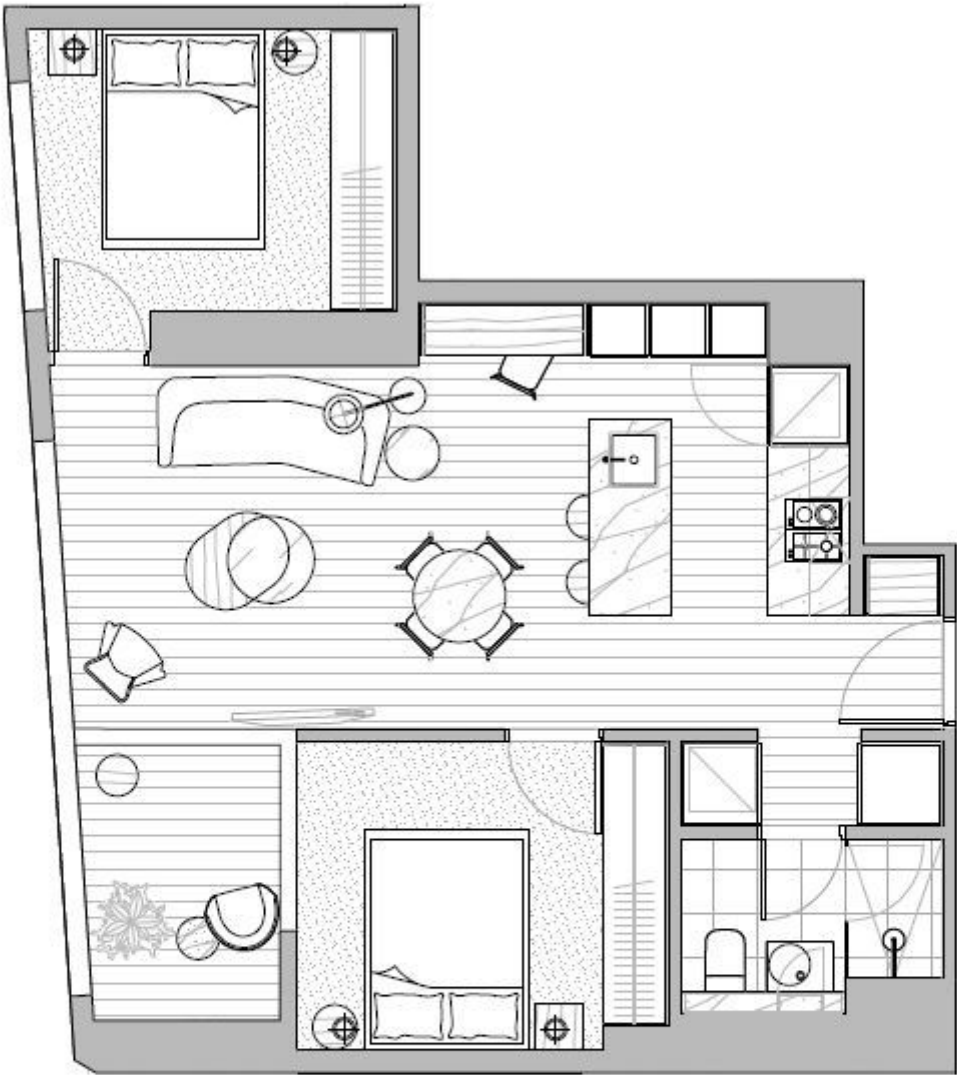
The apartment includes highest quality features and finishes, such as timber floor boards, air-conditioning and intercom system.

With countless amenities nearby like theatres, bars and eateries, Carlton Gardens, Queen Victoria Market and most importantly, Swanston Central is within absolutely walking distances to some of Melbourne most elite schools such as Melbourne University and RMIT, added with Melbourne Central, QV, China Town, Bourke Street Mall and Emporium. The location is fla



Gerry Wang

0402 414 065



INTERNAL AREA	59.0m ²
WINTERGARDEN AREA	5.8m ²
TOTAL AREA	64.8m ²

This plan is prepared before the completion of the design, engineering and construction elements of the project. The plan is intended only as a guide and is not to be used for any other purpose. Prospective purchasers should obtain their own independent legal advice in relation to the contract of sale.

