



G11/92 Cade Way PARKVILLE, VIC

 2  1  1

Your Box just Ticked

If you have been looking for a property close to Melbourne University, you can now tick your box.

Privately situated in the tree-lined Hyde Apartment Village of Parkville and more like a little house with private courtyard, this boutique Ground Floor apartment will be a definite beautiful home for either a first home buyer or a lucrative investment for an astute investor.

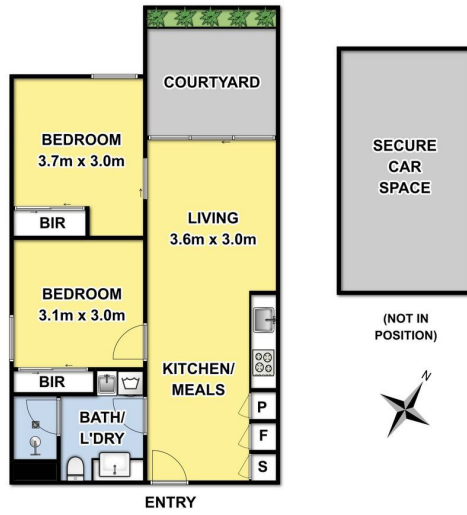
G11 is a two bedroom apartment comprising generous open plan layout, Euro kitchen with stainless steel appliances, stylish bathroom with double shower, two double bedrooms, both with BIRs and windows and a private courtyard-like balcony.

Parkville is a very popular inner City suburb and renown for its great reputation being so



Gerry Wang

0402 414 065



G11/92 CADE WAY PARKVILLE

THIS FLOOR PLAN IS A SKETCH ALL DATA SHOWN IS GENERAL ONLY.
NB: ALL DIMENSIONS STATED ARE APPROXIMATE ONLY
AND SHOULD NOT BE TAKEN AS DEFINITE.