



302/23 Bent Street BENTLEIGH, VIC

 2  2  2

## Contemporary Lifestyle Complimented with Stunning Quality

Exclusively situated in the tree-lined tranquil Bent Street and literally meters away from the vibrant heart of Bentleigh shopping precinct, the Bentleigh is absolutely a top class boutique development, which is just completed and ready for occupancy.

As the last one remaining as brand new, Apartment 302 is located on the top floor, which will tick all the boxes from any owner, regardless how fussy and picky he or she is.

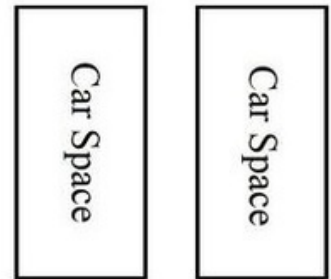
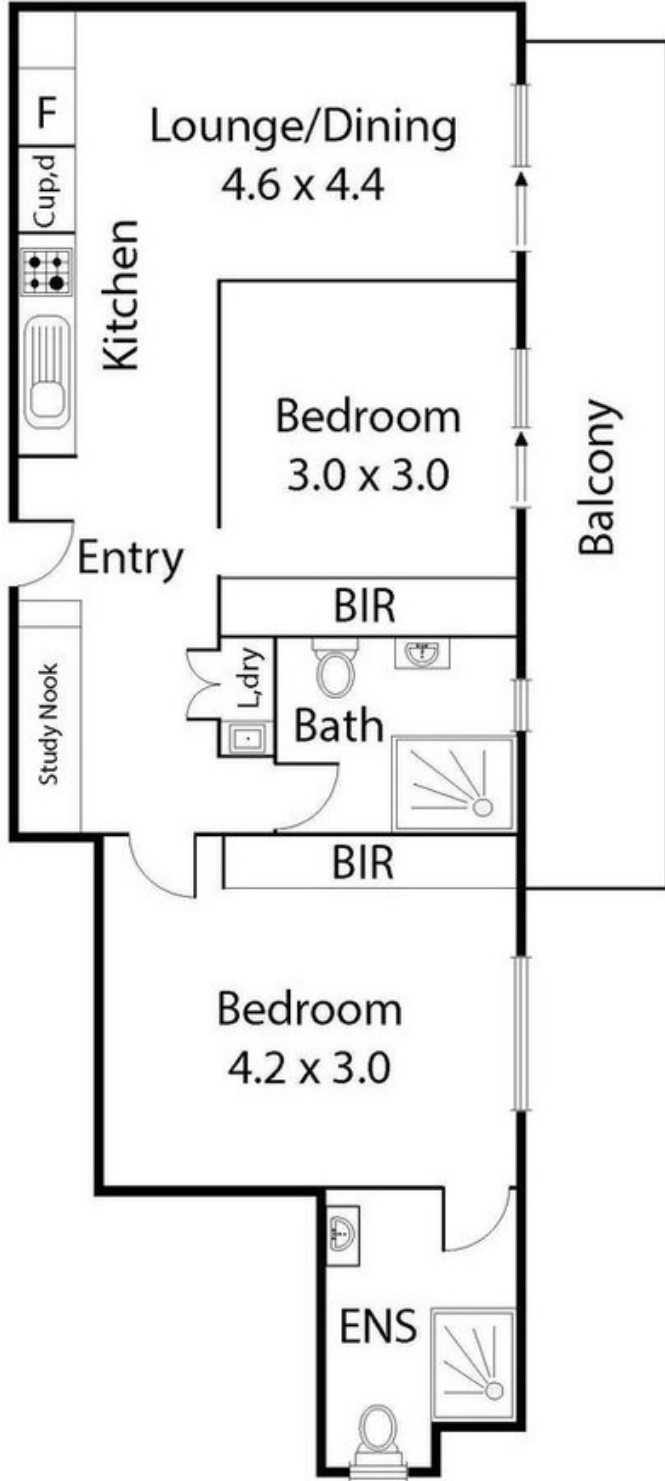
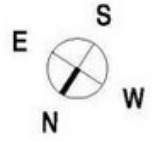
Comprising an approximate size of 81sqm internal space and 16sqm full length balcony, it features a sophisticated floor plan, including generous open plan living and meals, gourmet kitchen fully equipped with stainless steel appliances, such as 4-burner gas stove, European oven, dishwasher plus ample storage, two bedrooms (master with Ensuite), stylish second bathroom, a full size study nook, Euro laundry, and two secure car parks on title, plus one



**Gerry Wang**

0402 414 065

302/23 Bent Street, Bentleigh



(not in position)