



6C/168 Victoria Road NORTHCOTE, VIC

 2  2  1

More Like a House with a Massive Private Courtyard

Located on the Ground Floor of this modern residential complex in central Northcote, this modern apartment has a unique feature that no other apartments can compare: the massive North-facing courtyard with brings fantastic natural light only houses can do.

Approximately over 101sqm in total size including balcony and courtyard (approx. 32sqm), 6C boasts open plan living, fully equipped Euro kitchen with stone benchtops and meal area, two double bedrooms, both with BIRs and master with ensuite, stylish second bathroom and Euro cupboard laundry.

Situated just away from Victoria Rd and right opposite the Northcote Aquatic and Recreation Centre, within only a short distance to Northcote Plaza Shopping Centre, this apartment



Gerry Wang

0402 414 065

BOULISTE
APARTMENTS OF RESIDENTS

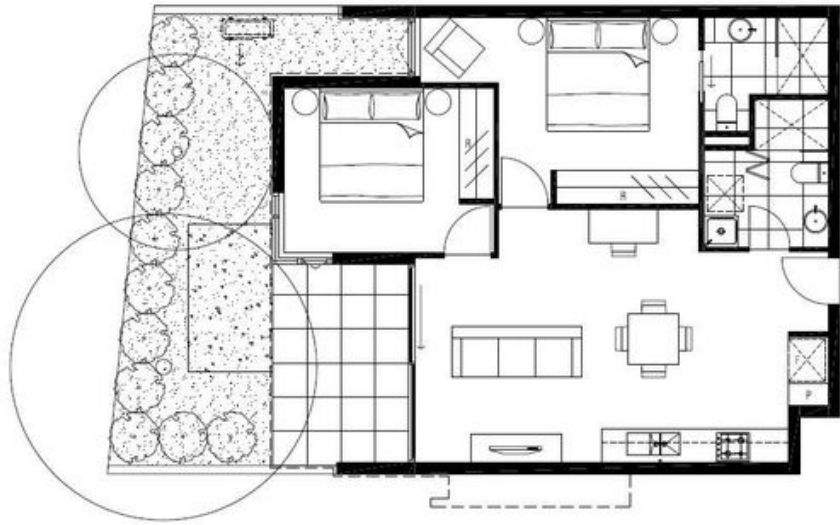


VICTORIA ROAD
APARTMENT TYPE 6C

APARTMENT
NUMBER 6C

2 BEDROOMS

TOTAL AREA	101.1M ²
INTERNAL AREA	69.1M ²
EXTERNAL AREA	32.0M ²



All images, plans and diagrams are illustrative in nature. Measurements only with floor level indicated and are subject to change without notice. A professional architectural drawing is available only in the format of a PDF file. Detailed floor area is provided in the table to the right of the drawing. All areas are to be measured in accordance with the Australian Standard AS 2284.1-2007. Particulars should be verified with the plans and specifications provided in the contract of sale prior to signing.