



2002/296-300 Little Lonsdale Street MELBOURNE,  
VIC

 1  1

## UNION TOWER HAS IT ALL THAT CENTRAL CITY LIVING CAN OFFER

-----SALE VIA NOMINATION, READY TO MOVE IN AROUND LATE OF OCTOBER----

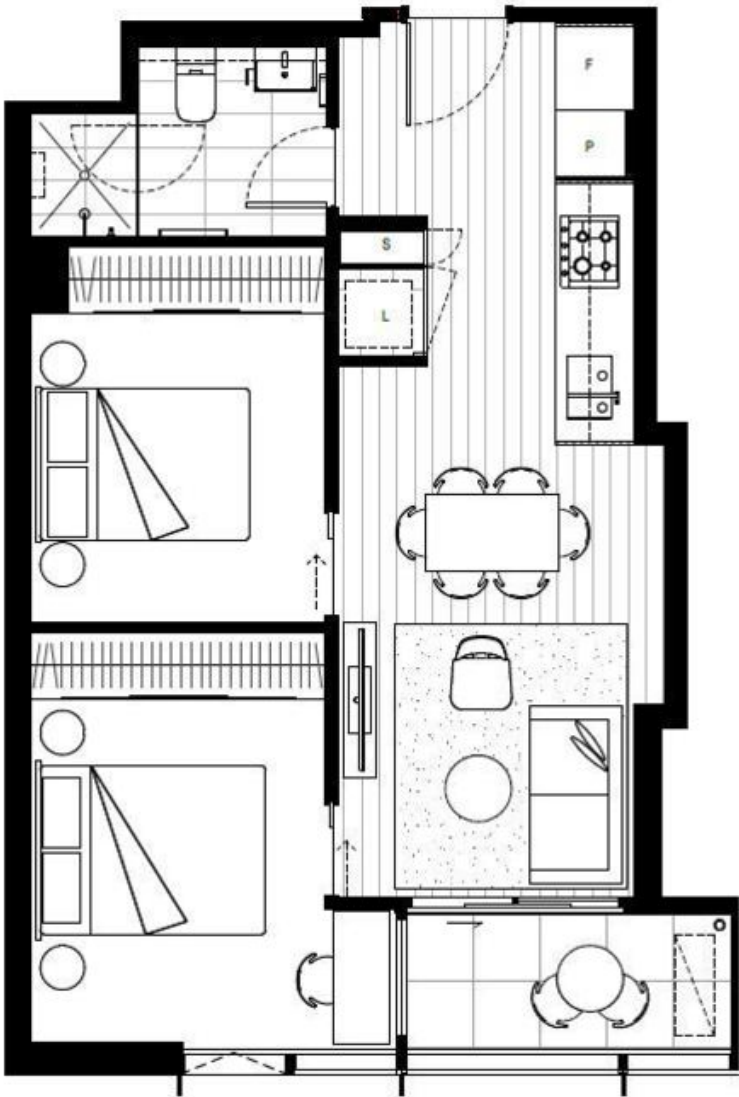
This spacious Two Beds One bathroom south facing apartments is on the 20th floor. Inside of this apartment are offering an exceptional quality finishes including, timber floors to living spaces and high-quality appliances as standard. It also comprises: open plan living, fully equipped kitchen, two bedrooms, one bathroom and BIRS, separate laundry.

Features:



**Melpex Real Estate**

LEVELS 7-34



|           |        |
|-----------|--------|
| BEDROOMS  | TWO    |
| BATHROOMS | ONE    |
| APARTMENT | 52.0M2 |
| BALCONY   | 4.3 M2 |
| TOTAL     | 56.3M2 |

