

Level 46/224 La Trobe Street MELBOURNE, VIC

 1  1

North-facing Aspect with Winter Garden

Situated on the 46th floor, this lovely one bedroom apartment is now available for either an astute investor or a first home owner to take over as a fantastic opportunity.

With Northern aspect and great natural light, it comprises of open plan living, Euro kitchen fully equipped with stainless steel appliances, stone island bench, stylish bathroom, Euro Laundry, large bedroom with BIRs and balcony.

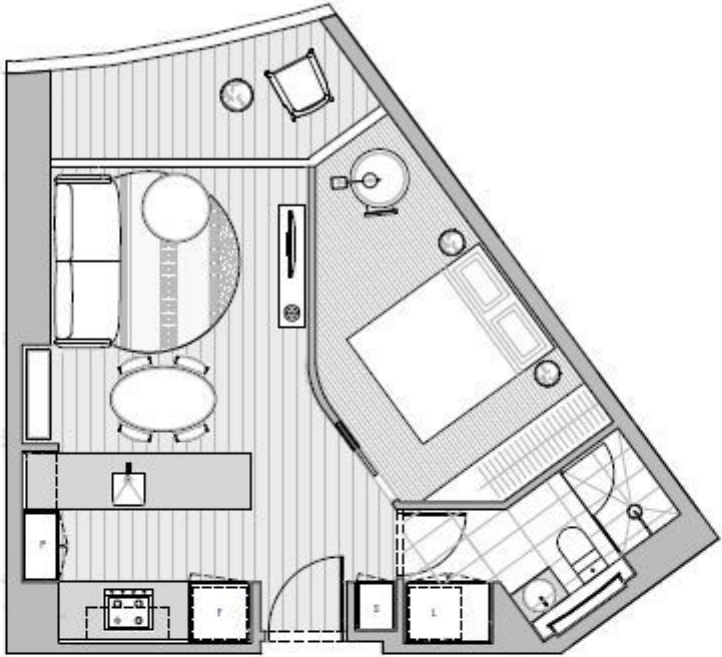
Building also features: indoor lap pool, gym, resident's lounge, steam room, sauna, plus heaps of other facilities for modern lifestyle.

Strategically situated in the middle of La Trobe St and the absolute heart of Melbourne CBD, Aurora, has been the most sought after residential target for Melbournians. Designed as the only tower with direct connect to Melbourne Central Shopping Centre and Train Station, Aurora is within walking distances to all the CBD amenities including Emporium, Bourke S



Gerry Wang

0402 414 065



LEVEL 35-65		UNIT 06 & 07	
LITTLE LA TROBE STREET			
			
LA TROBE STREET 			
1 BEDROOM / 1 BATHROOM			
APARTMENT		43.1 m ²	
WINTERGARDEN		5.6m ²	
TOTAL		48.7m²	