



Level 58/224 La Trobe St MELBOURNE, VIC

 2  1  1

Aurora's Corner Apartment with Amazing Views!

Aurora, being one of the most sought after residential towers in the heart of Melbourne CBD and the highest Iconic Residential Building in the years to come.

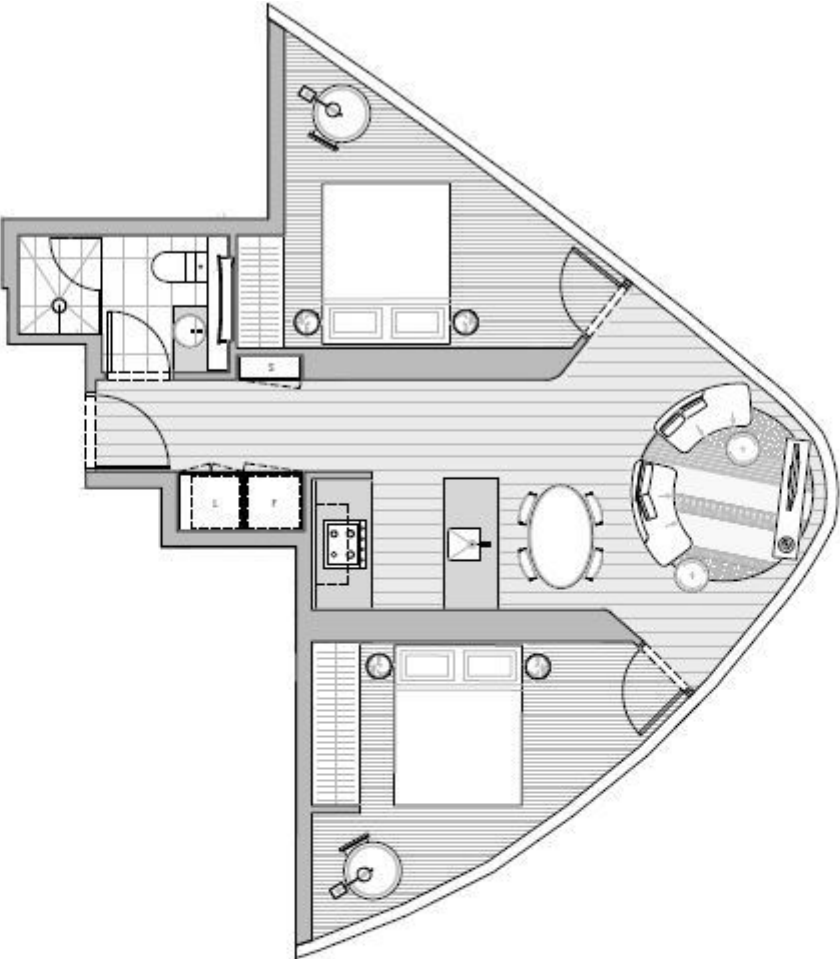
Situated on the 58th floor of the most popular Aurora Tower, this beautiful two bedroom apartment is now available for either an astute investor or a first home owner to take over as a once-in-a-life time opportunity.

Current owner is seeking a lucky nominee to take over the existing purchase with massive stamp duty and settlement is expected to be early 2019.

Melplex 

Gerry Wang

0402 414 065



LEVEL 35-65 UNIT 03 & 09	
<div>LITTLE LA TROBE STREET</div>  <div>LA TROBE STREET</div>	
2 BEDROOM / 1 BATHROOM	
APARTMENT	59.9m ²
WINTERGARDEN	0.0m ²
TOTAL	59.9m ²