

Level 49/224 La Trobe Street MELBOURNE, VIC

 1  1

### Aurora: the Most Sought After.

Strategically situated in the middle of La Trobe St and the absolute heart of Melbourne CBD, Aurora, has been the most sought after residential target for Melbournians. Designed as the only tower with direct connect to Melbourne Central Shopping Centre and Train Station, Aurora is within walking distances to all the CBD amenities including Emporium, Bourke St, Mall, State Library, RMIT, Melbourne University.

Situated on the 49th floor, this lovely one bedroom apartment is now available for either an astute investor or a first home owner to take over as a fantastic opportunity.

Building also features: indoor lap pool, gym, resident's lounge, steam room, sauna, plus heaps of other facilities for modern lifestyle.

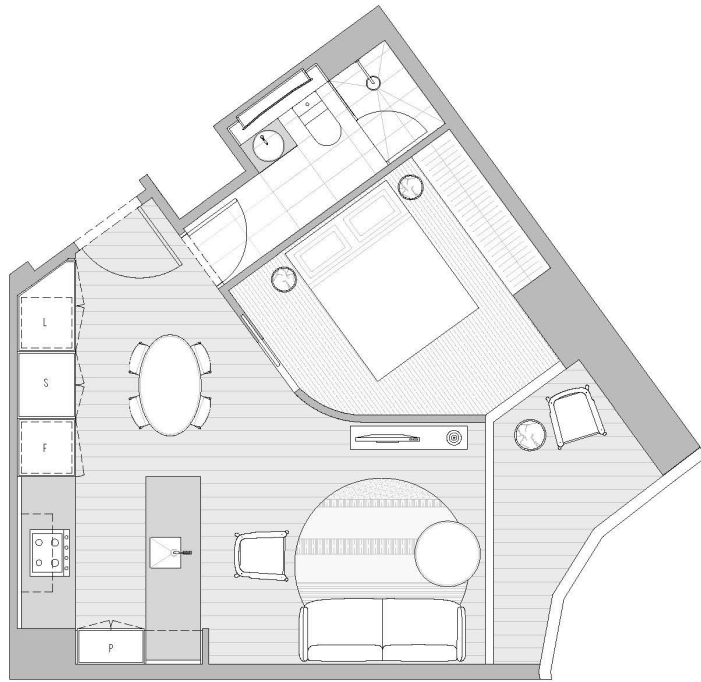
Don't miss this out again!



**Gerry Wang**

0402 414 065

**THE CUMULUS COLLECTION** **APARTMENT TYPE A1**



**LEVEL 35-65 UNIT 01,11,12,20**

LITTLE LA TROBE STREET



LA TROBE STREET 

**1 BEDROOM / 1 BATHROOM**

APARTMENT	44.1m <sup>2</sup>
WINTERGARDEN	5.1m <sup>2</sup>
<b>TOTAL</b>	<b>49.2m<sup>2</sup></b>

These floor plans were prepared before the completion of the design, engineering and construction elements of the project. The floor plans are intended only as a guide and an aid to further investigations by potential purchasers and are subject to change in relation to areas and dimensions, floor layout, design, engineering, fittings and specifications. The areas and dimensions set out in the floor plans are calculated using the Property Council Method of Measurement for Residential Property current at the date of preparation of the floor plans. Prospective purchasers should make their own enquiries and obtain their own independent legal advice in relation to the contract of sale.